

Critical Access Hospital Telehealth Guide

Updated February 2024



525 South Lake Avenue, Suite 320

Duluth, Minnesota 55802

(218) 727-9390 | info@ruralcenter.org | www.ruralcenter.org

This project is/was supported by the Health Resources and Services Administration (HRSA) of the U.S. Department of Health and Human Services (HHS) under grant number UBIRH24206, Information Services to Rural Hospital Flexibility Program Grantees, \$1,350,000 (0% financed with nongovernmental sources). This information or content and conclusions are those of the author and should not be construed as the official position or policy of, nor should any endorsements be inferred by HRSA, HHS or the U.S. Government.

This guide was prepared by:



National Rural Health Resource Center

525 South Lake Avenue, Suite 320

Duluth, Minnesota 55802

Phone: 218-727-9390

www.ruralcenter.org

and



Northwest Regional Telehealth Resource Center

C/O Utah Telehealth Network

101 Wasatch Drive

Salt Lake City, UT 84112

Phone: 801-587-0349

<https://nrtrc.org/>

Contents

Introduction..... 5

The Potential of Rural Telehealth..... 7

Telehealth Basics – Medicare.....10

 Mental Health Services & RHCs18

 Care Management Services: Chronic/Principal Care Management, Chronic Pain
 Management and Behavioral Health Integration (CCM, PCM, CPM and BHI)20

 Remote Physiologic (or patient) or Therapeutic Monitoring (RPM/RTM). 23

 Virtual Communication Services.....24

 E-Consults aka Interprofessional Consults.....26

Engaging Key Stakeholders 27

Initial Steps to Begin or Reassess a CAH Telehealth Program 32

Vendor Selection and Guidance36

Adoption & Sustainability – Key Factors.....39

 Buy-In39

 Financial Considerations..... 40

 Leadership and Staff Engagement & Education 40

Person-Centered Telehealth45

 Engagement & Education.....45

 Health Equity - Barriers and Potential Solutions46

 Patient Safety50

Communication & Support..... 52

Workflows	52
Billing & Reimbursement.....	55
Documentation	58
Virtual Care Team Considerations.....	59
Care Coordination with Telehealth & Care Management.....	60
Quality Improvement & Quality Assurance.....	62
Quality Improvement (QI).....	62
Quality Assurance.....	63
Legal and Risk Management Considerations.....	65
HIPAA Privacy & Security	66
HIPAA Privacy.....	66
HIPAA Security & the Security Risk Analysis.....	67
Business Associate Agreements (BAAs)	69
Rules, Regulations & Keeping Current.....	69
Resources to Bookmark.....	71
Appendices	72
Appendix A – Telehealth Services and Codes.....	72
Appendix B – Sample Telehealth-Related Workflows	73
Appendix C – Telehealth Program Assessment	77

Acknowledgments:

This report is prepared for the National Rural Health Resource Center Technical Assistance and Services Center (TASC) through a partnership between the Northwest Regional Telehealth Resource Center (NRTRC) and Trudy Bearden of Bearden Consulting. This project was funded under the Health Resources and Services Administration (HRSA) of the U.S. Department of Health and Human Services (HHS) under G22RH31114 Telehealth Resource Center's Grant Program in conjunction with HHS under grant number UBIRH24206, Information Services to Rural Hospital Flexibility Program Grantees, \$1,350,000 (0% financed with nongovernmental sources). This information or content and conclusions are those of the author and should not be construed as the official position or policy of, nor should any endorsements be inferred by HRSA, HHS, or the U.S. Government.

Disclaimer:

The views, opinions, and content of this publication are those of the authors and do not necessarily reflect the views, opinions, or policies of TASC, NRTRC, HRSA, or HHS. Nothing in this document constitutes a direct or indirect endorsement by TASC, NRTRC, HRSA, or HHS of any non-federal entity's products, services, or policies, and any reference to non-federal entity's products, services, or policies should not be construed as such.

Feedback on the Critical Access Hospital Telehealth Guide:

If you have feedback, suggestions, or corrections, please let us know at info@NRTRC.org

Introduction

Telehealth has been used as a modality to deliver health care services for over six decades, but its potential to expand access and keep people safe came sharply into focus during the COVID-19 pandemic when using telehealth became an imperative. Critical Access Hospitals (CAHs) have multiple options to expand and optimize telehealth service to meet the quadruple aim¹ - now expanded to the quintuple aim^{2,3}.

- *Improve patient health and outcomes* by better disease management, monitoring, and timely care.
- *Reduce health care costs* by fewer emergency department (ED) visits, admissions, and readmissions.
- *Enhance the patient experience* by expanding access, improving convenience, coordinating care, and building relationships.
- *Enrich the work-life of staff* by providing more options to optimize health care service delivery, enhancing flexibility in work locations and schedules, and serving patients in ways that are better for everyone.
- *Focus on health equity* to overcome barriers to health care services for all individuals in ways that work for them.

The CAH Telehealth Guide provides practical guidance on implementing and sustaining telehealth to optimize health care delivery, expand access, enhance care coordination, and address health inequity. Note that this is not an all-inclusive policy guide for telehealth. Just as health care organizations strive to take a person-centered approach to health care, this guide seeks to take a CAH-centered approach to telehealth that keeps the patient and community at the forefront. The target audience is any individual, team, or organization seeking to implement or expand telehealth services in the CAH setting. The guide primarily focuses on Medicare

¹ Bodenheimer T, Sinsky C. [From Triple to Quadruple Aim: Care of the Patient Requires Care of the Provider](#). Ann Fam Med. 2014; 12(6): 573-6.

² Nundy S, Cooper L, Mate, K. [The Quintuple Aim for Health Care Improvement: A New Imperative to Advance Health Equity](#). JAMA. 2022; 327(6):521-522.

³ Itchhaporia D. [The Evolution of the Quintuple Aim](#). J Am Coll Cardiol. 2021; Nov 30; 78(22): 2262–2264.

outpatient telehealth services but includes Medicaid coverage and remote services that may not strictly be considered telehealth.

Readers are encouraged to review state-based telehealth policy details at the [Center for Connected Health Policy \(CCHP\)](#), which provides detailed state Medicaid agency telehealth details with helpful links to each states' relevant resources, manuals, statutes, etc.

Telehealth policy is ever changing; when possible, this guide identifies temporary rules and regulations. There is broad support by health care industry leaders to maintain many of the flexibilities allowed under the public health emergency (PHE), which ended May 11, 2023. Check CCHP's [Telehealth Legislation & Regulation](#) site to track telehealth state legislation and regulation across the nation for the current legislative session.

The Potential of Rural Telehealth

The full potential of telehealth in rural settings has yet to be realized primarily due to intermittent broadband availability. Telehealth has a promise to deliver health care to the right populations at the right place and time – efficiently. Additionally, community-based solutions have yet to be optimized, and opportunities abound to enhance care coordination by communication with shared care partners. Regardless, below are several potential telehealth benefits and opportunities for CAHs, their rural health clinics (RHCs), patients, families/caregivers, clinicians, care teams, and the community.

Enhance access. By acting as an originating site, CAHs can expand the range of specialty services and access to those services by health care professionals, patients, and the entire community. This is a fantastic service and benefit to patients, families, caregivers, and the community. In addition, consider CAHs' current use of telestroke programs to access neurologists and other specialists to optimize timely stroke interventions and care; teledermatology to evaluate and treat skin conditions, including decubitus ulcers, rashes, bites, and more; telepharmacy to optimize medical management; telebehavioral health for mental health; telehealth for substance use disorders; teleradiology for expert radiologists to render readings of images; teleophthalmology, primarily to ensure individuals with diabetes receive recommended retinal eye exams; teledentistry in areas with oral health provider shortages; use of telemedicine for the requirement that a medical doctor (MD) or doctor of osteopathic medicine (DO) must be immediately available for emergency services⁴; and a full range of additional specialists.

Deliver supportive services for long-COVID. Resulting from the burden of COVID-19 infection – both on a national and individual level, the health care system sees the long-term impacts and chronic illnesses that linger after the disease has abated. Many patients need long-term medical

⁴ [Critical Access Hospital \(CAH\) Emergency Services and Telemedicine: Implications for Emergency Services Condition of Participation \(CoPs\) and Emergency Medical Treatment and Labor Act \(EMTALA\) On-Call Compliance](#). CMS. 2013.

and chronic illness management as well as self-management support. Telehealth and other virtual services (e.g., Chronic Care Management Services) are essential to expanding options and access to support these individuals to optimize health and wellbeing.

Provide telehealth support for patients, families, and caregivers. For patients in the surrounding communities, CAHs' acting as an originating site provide access to specialists but also offer the opportunity to provide the support needed for patients to engage in a telehealth visit, including but not limited to a device with audio and video capabilities, adequate bandwidth, technical support for those with limited digital proficiency, a quiet and safe space in which to engage in a telehealth visit, and an option that is closer to home.

Expand behavioral health. Telebehavioral health was well-established before the pandemic but is even more critical in the post-pandemic period as people emerge with lingering depression, anxiety, substance use disorder, and other mental health issues, including those associated with [long COVID](#).

Elevate patient convenience. Many patients in rural areas travel several hours for specialists and other appointments for services unavailable in their rural town or county. This can create an immense burden, especially for individuals without reliable transportation, those for whom mobility is challenging, those who cannot take needed time off from work, or for those who are caregivers and must either find coverage or bring the people for whom they provide care to a visit. Telehealth can decrease the out-of-pocket costs created by these burdens and can be a lifesaver, especially when time is of the essence.

Flexible staffing options. When conducting telehealth visits, members of the virtual care team may participate in the visit regardless of their location. While some staff may need to be at the CAH originating site, other members of the care team (e.g., medical assistant

Through Dec 31, 2024, CMS will continue to permit distant site practitioners to use their currently enrolled practice location instead of their home address when providing telehealth services from their home. (CY2024 PFS FR p. 78874)

(MA), receptionist, social worker) may not need to be onsite for the telehealth visit and can be at their home, a different clinic site or essentially anywhere as long as they have the required tools (see [Virtual Care Team Considerations](#)). This option can be helpful – for example – when travel to the clinic is dangerous due to weather, staff cannot arrange childcare, transportation to the clinic is problematic, or a staff member has a mild illness (especially if it is a contagious illness).

Preserve and capture revenue. Ensuring a full suite of telehealth services, including remote physiologic (patient) monitoring (RPM) and other virtual services, can help maintain the annual average length of stay of 96 hours or less for acute care patients by enhancing access to specialists and services as noted

Telehealth services listed as provisional on CMS' [List of Telehealth Services](#) are in place through Dec 31, 2024. Select telehealth services can be delivered using audio only through Dec 31, 2024.

above and by providing telehealth and other virtual services for patients in their homes when safe and appropriate. This can lead to fewer transfers to other hospitals. While the [originating site fee is around \\$30](#), those charges add up. Any cost savings are significant in value-based payment models, like accountable care organizations (ACOs). Lowering costs and improving quality are crucial for financial success through incentives and risk reduction.

Decrease staffing costs. Evidence shows that tele-ED physician backup for advanced practice providers decreases staffing costs, sometimes upwards of \$100,000, and improves physician recruitment and retention.^{5,6} Using tele-ED physician backup reduces costs by sharing salary costs; a CAH can pay a part-time or on-call salary for a physician rather than having to pay a full physician salary. Additionally, paying the salary for a nurse practitioner or physician assistant to cover the ED with physician backup by telehealth is less costly than paying for full physician coverage of the ED.

⁵ Ward, M, et al. [Use of Telemedicine for ED Physician Coverage in Critical Access Hospitals Increased after CMS Policy Clarification](#). Health Aff. 2018. 37(12) 2014; 12(6): 2037-44.

⁶ Potter, A, et al. [Effect of Tele-emergency Services on Recruitment and Retention of US Rural Physicians](#). Rural Remote Health. 2014;14(3): 2787.

Telehealth Basics – Medicare

The Health Resources & Services Administration (HRSA) [definition of telehealth](#) is succinct and accurate: “Telehealth is defined as the use of electronic information and telecommunication technologies to support long-distance clinical health care, patient and professional health-related education, health administration, and public health.”

Per the Centers for Medicare & Medicaid Services (CMS), telehealth requires interactive audio and a video telecommunications system that permits real-time communication between the clinician at the distant site and the patient at the originating site. The exceptions are Alaska and Hawaii, where asynchronous technology or store and forward — defined as the transmission of medical information to the distant site and reviewed later by the physician or practitioner — is permitted in federal telemedicine demonstration programs. CMS further narrows telehealth service delivery by the services and codes in the [CMS List of Telehealth Services](#). See [Telehealth Services and Codes Table](#) in appendices for a current list of the telehealth codes and services. All of these services can be delivered either in person or by telehealth. Most state Medicaid agencies follow the same telecommunication requirements, but some states also allow audio-only telehealth with or without contingencies (e.g., only if a video is impossible). Many state Medicaid agencies do not reimburse for the full range of telehealth services, and CAHs may need to check which telehealth codes are covered by Medicaid.

While this section focuses on telehealth from the Medicare perspective, many state Medicaid agencies and other commercial/private health plans follow Medicare’s lead for their definitions of telehealth, including for distant and originating sites and service and payment parity. Several states also have permanent allowances for audio-only telehealth. Medicare, most state Medicaid agencies, and other health plans require patient/family consent to engage in telehealth. See the [Consent](#) section below for additional details. Below are several telehealth-related terms.

Originating site (where the patient is). CAHs/RHCs are authorized to act as originating sites for services provided to Medicare beneficiaries and are eligible to receive [reimbursement for the originating site fee](#), using Health care Common Procedure Code System (HCPCS) reimbursement code Q3014. More information is in [Billing & Reimbursement](#) below.

When a CAH acts as an originating site, the patient is physically at the CAH and receives telehealth services from a distant site provider. There are several conditions of participation for this agreement. See [Title 42 of the Code of Federal Regulations \(CFR\) §485.616 Condition of participation: Agreements](#) to ensure compliance, if applicable to the hospital. Note the requirement for written agreements with distant site providers.

“In the case of **distant-site physicians and practitioners** providing telemedicine services to the CAH's patients under a written agreement between the CAH and a distant-site telemedicine entity, the distant-site telemedicine entity is **not required to be a Medicare-participating provider or supplier.**” [CFR §485.635 Condition of participation: Provision of services](#)

A distant-site hospital providing telemedicine services **must be a Medicare-participating hospital.** [CFR §485.616 Condition of participation: Agreements](#)

To identify if an address is eligible for a Medicare telehealth originating site payment, enter the originating site address into the [Medicare Telehealth Payment Eligibility Analyzer](#). Three important exceptions include⁷:

1. There are no geographic location limitations or originating sites where acute stroke telehealth service can be furnished.⁸
2. Substance Use-Disorder Prevention that Promotes Opioid Recovery and Treatment (SUPPORT) for Patients and Communities Act removes the originating site geographic

⁷ [Telehealth Services Factsheet – MLN Booklet](#). CMS. This booklet include MUST READ information when delivering telehealth services to Medicare beneficiaries.

⁸ [New Modifier for Expanding the Use of Telehealth for Individuals with Stroke – MLN Matters](#). CMS. Effective Jan 1, 2019.

conditions and adds an individual's home as a permissible originating telehealth services site for treatment of a substance use disorder or a co-occurring mental health disorder.

3. There are no geographic location limitations for hospital-based and CAH-based renal dialysis centers, renal dialysis facilities, and beneficiary homes when practitioners furnish monthly home dialysis ESRD-related medical evaluations. Independent Renal Dialysis Facilities are not eligible for originating sites.

Geographic and location restrictions have been lifted through Dec 31, 2024, meaning that the originating site – where the Medicare beneficiary receives telehealth services – does *not* need to be in a county outside a Metropolitan Statistical Area or a rural Health Professional Shortage Area in a rural census tract to receive.

Distant site (where the clinician is). CMS does not currently include CAHs or their RHCs as distant sites, meaning that Medicare cannot reimburse these organizations for delivering the telehealth services listed in [CMS' List of Telehealth Services](#). See [Billing & Reimbursement](#) below for the two situations when a CAH can be a distant site. The list of telehealth codes can also be found in Appendix P of a Current Procedural Terminology (CPT®) codebook, and a star symbol also indicates telehealth codes throughout the codebook.

RHCs may act as distant sites through Dec 31, 2024.

Hospitals do not technically bill for Medicare telehealth services as a distant site. However, the [Medicare Claims Processing Manual Chapter 12](#) states that “If the physician or practitioner at the distant site is located in a CAH that has elected Method II, and the physician or practitioner has reassigned their benefits to the CAH, the CAH bills its regular A/B/MAC (A) for the professional services provided at the distant site via a telecommunications system, in any of the revenue codes 096x, 097x or 098x. All requirements for billing distant site telehealth services apply.”

Providers at the distant site who are eligible to receive payment for telehealth services include⁹:

- Physicians
- Physician assistants
- Nurse practitioners
- Clinical nurse specialists
- Nurse-midwives
- Certified registered nurse anesthetists
- Clinical psychologists and clinical social workers (may not bill for psychiatric diagnostic interviews or E/M services)
- Registered dietitians or nutrition professionals
- Marriage and family therapists (MFTs) and mental health counselors (MHCs)

Qualified occupational therapists, physical therapists, speech-language pathologists, and audiologists are included as telehealth practitioners through Dec 31, 2024.

Consent. Medicare, most state Medicaid agencies, and other insurers require patients' informed consent for telehealth. While consent for Medicare beneficiaries is straightforward, other insurers, including state Medicaid agencies, have informed consent requirements that can be complex and are along the lines of consent for procedures – risks, benefits, and alternatives. Below are the consent requirements for Medicare. Check directly with other insurers for their specific requirements and guidance for informed consent. Obtaining and documenting consent to receive telehealth services can be obtained by the care team.

Medicare Consent for Telehealth

Medicare requires beneficiary consent — verbal or written — to receive telehealth and other virtual services. The patient must be advised of any applicable cost-sharing, including potential deductible and coinsurance amounts. Consent must be documented in the patient's medical record and may be obtained at the time services are provided. In general, auxiliary personnel under general supervision of the billing practitioner may obtain this consent, and that person may be an employee, independent contractor, or leased employee of the billing practitioner.¹⁰

⁹ [42 CFR 410.78 Telehealth services](#) and link to an amendment published at [88 FR 79528](#), Nov. 16, 2023.

¹⁰ [Telehealth Services](#). CMS.

State Medicaid Agencies' Consent for Telehealth

Each state has requirements for consent for telehealth. The best place to identify state-specific consent requirements is at the Center for Connected Health Policy (CCHP) site [Current State Laws & Reimbursement Policies](#). Select "State" at the top of the page → select state of interest → select "Professional Requirements" → select "Consent Requirements."

Obtaining consent is primarily the responsibility of the distant site provider, but the originating site care team can help facilitate obtaining consent, too. Consent for telehealth can be streamlined by developing a standard script and creating a template in the EHR that ensures compliance with the relevant consent requirements.

Resource:

- [Obtaining informed consent](#). Telehealth.HHS.gov.

Store and forward. The asynchronous, electronic transmission of or access to patient information - usually images - to evaluate, diagnose and guide treatment. Examples include teleradiology, where images are sent to a radiologist to assess and render findings; teledentistry, where a dental hygienist will obtain dental images to send for interpretation by a dentist; and teleophthalmology, where a retinal scan is sent to an ophthalmologist to determine if there is any pathology or change in eye health.

Peripherals. Equipment used at the originating site to collect patient physiologic information to share the data with the provider at the distant site. Some peripherals allow the distant site provider to gather the information that is typically collected during an in-person exam. Examples of peripherals include blood pressure monitor, pulse oximeter, fetal heart doppler, glucometer, incentive spirometer, lighted tongue depressors, digital otoscope, scale(s), stethoscope, or thermometer. (See [Peripherals](#) section at Home Telehealth Overview at the National Telehealth Technology Assessment Resource Center (TTAC)).

Telepresenter. A health care professional who is trained to facilitate a remote exam with or without telehealth peripheral equipment, collect vital signs, and provide additional assistance or patient evaluation at the originating site for the provider at the distant side. See this [short video on telepresenting](#).

Resources:

1. [What is telehealth?](#) CCHP. Excellent set of definitions for telehealth and related terms and a one-pager – [A Framework for Defining Telehealth](#).
2. [CMS Telehealth Services Fact Sheet](#). CMS. Excellent resource with the details of telehealth service delivery for Medicare beneficiaries. Info also applies to CAHs/RHCs.
3. [CMS List of Telehealth Services](#). CMS. Complete list of telehealth services and codes frequently updated during the COVID-19 pandemic but usually just updated annually.
4. [Physician Fee Schedule Look-Up Tool](#). CMS. Use this tool to search pricing amounts for billing codes.
5. [Current State Laws & Reimbursement Policies](#). CCHP. Telehealth policy changes, including comprehensive, state-specific look-up tool with state Medicaid statutes and other information related to telehealth policy and allowances.
6. [Billing for Telehealth Encounters – An Introductory Guide on Fee for Service](#). CCHP. July 2023. This resource is updated every year; readers may need to search for the most recent edition. Excellent information about telehealth billing and reimbursement.

7. [American Medical Association Telehealth Implementation Playbook](#). American Medical Association. This is a long document at 128 pages, but it is exceptionally complete and well done. Recommend scrolling through the document for the parts that apply, such as Designing the Workflow and references to documentation.
8. [National Consortium of Telehealth Resource Centers](#) – Provides trusted consultation, resources, and news at no cost to help you plan your experience. Start here to find the HRSA-funded Telehealth Resource Center representing your state.
9. [Telehealth.HHS.gov](#). **HRSA**. Comprehensive telehealth resource.
10. [Medicare Telehealth Payment Eligibility Analyzer](#). **CMS**. Use this analyzer to check if an address is eligible for a Medicare telehealth originating site payment, noting that the address is not in a metropolitan statistical area (MSA) OR if it does fall in an MSA, the address must be in a rural area and be a primary care or mental health geographic Health Professional Shortage Area (HPSA). Note that geographic limits for originating sites do not apply through Dec 31, 2024.
11. [Telehealth Essentials](#). **MATRC**. One pager on telehealth essentials.
12. [Resources for Telehealth at Safety Net Settings](#). **University of California San Francisco – Center for Vulnerable Populations**. Several telehealth resources.

While telehealth has tremendous opportunities to enhance access, keep people safe, and capture reimbursement, there are several additional virtual services – listed below - for CAHs and their RHCs to consider adding to the suite of options for remote health care service delivery. Remote

(or virtual) service delivery includes telehealth (as defined by the [CMS List of Telehealth Services](#)) and any health care service delivery that does not require that the patient be seen in person. From a delivery and reimbursement standpoint, virtual service delivery is usually constrained to services for which there is a billing code, reimbursement, and service details, generally found in the full CPT or HCPCS code description, CPT[®] codebook, or factsheets/websites provided by Medicare.

Mental Health Services & RHCs

The Consolidated Appropriations Act of 2021 removed geographic originating site restrictions and allowed individuals to receive mental health telehealth services in their home for the diagnosis, evaluation, or treatment of a mental health disorder under the physician fee schedule (PFS). CMS recognized that FQHC and RHC providers would need the same flexibilities to ensure equitable access to mental health services because they are paid under the [Prospective Payment System](#) (PPS) and [All Inclusive Rate](#) (AIR) (not the PFS). To accomplish this CMS made the following changes in the [Calendar Year 2022 Physician Fee Schedule Final Rule](#) (CY2022 PFS FR pp. 65207-65211) to align policies to provide access to services furnished by FQHCs and RHCs similar to PFS services, where appropriate and within statutory requirements.

- Redefine an FQHC/RHC mental health visit to include “encounters furnished through interactive, real-time telecommunications technology, but only when furnishing services for the purposes of diagnosis, evaluation, or treatment of a mental health disorder”.
- Permit audio-only communications technology in areas with poor broadband infrastructure and among patient populations that are not capable of or do not consent to the use of devices that permit a two-way, audio/video interaction.
- Require use of the 95 modifier (Synchronous Telemedicine Service Rendered via Real-Time Interactive Audio and Video Telecommunications System) in instances where both audio and video were used.
- Require use of an additional service modifier FQ or 93 for audio-only communication.
- Verify that if an individual is receiving these services from home “...there must be an **in-person mental health service furnished within 6 months prior** to the furnishing of the telecommunications service” and that in general, there must be an **in-person mental health service (without the use of**

The in-person requirements are delayed until Jan 1, 2025. (CY2024 PFS FR p. 78872)

telecommunications technology) must be provided at least every 12 months while the beneficiary is receiving services furnished via telecommunications technology for diagnosis, evaluation, or treatment of mental health disorders.” (p. 65210)

- Allow for limited exceptions to be made to the requirement for an in-person, non-telehealth service every 12 months based on beneficiary circumstances. However, the basis for that decision must be documented in the patient’s medical record. The risks and burdens must outweigh the benefits of an in-person visit. CMS clarifies the following reasons for an exception: patient is in partial or full remission and only requires a maintenance level of care; patient is clinically stable and/or an in-person visit has the risk of worsening the patient’s condition, creating undue hardship on self or family, or patient is at risk for disengagement with care that has been effective in managing the mental health issue.

Resource:

- [Mental Health Visits via Telecommunications for Rural Health Clinics & Federally Qualified Health Centers.](#) CMS.

Care Management Services: Chronic/Principal Care Management, Chronic Pain Management and Behavioral Health Integration (CCM, PCM, CPM and BHI)

A large proportion of health care expenditures are spent on a small proportion of high-risk patients, making care management and care coordination increasingly important, especially in the post-pandemic era. There are at least four excellent, frequently underutilized options for CAHs and their RHCs – CCM, PCM, CPM and BHI. Additionally, CCM/PCM/CPM/BHI services lead to enhanced reimbursement, including team-based care and work that the care team is already performing. These services provide monthly health care services in the critical time between visits to support patients and care givers.

Unless there is a compelling reason why an RHC cannot provide these services, every effort should be made to implement CCM, PCM, CPM and general BHI. Implementing the Psychiatric Collaborative Care Model (CoCM), an enhanced version of general BHI can be challenging due to the requirement of a psychiatric consultant. Still, the psychiatric consultant does not need to be available in person, and efforts can be made to find the fitting addition to the team to ensure these BHI services are available. Providing CCM and PCM can be a good source of revenue, too, as Medicare estimates that two-thirds of Medicare beneficiaries qualify for these services at some time.

Starting January 1, 2024, care management services provided in RHCs/FQHCs include (See CMS' [Rural Health Clinics Center – Care Management Services](#)):

- Transitional care management (TCM) (using codes 99495 and 99496)
- Chronic care management (CCM)
- Principal care management (PCM)

- Chronic pain management (CPM) - As of Jan 1, 2023¹¹, RHC can provide these services; CMS included Chronic Pain Management (CPM) services described by HCPCS code G3002 in the general care management HCPCS code G0511 when at least 30 minutes of qualifying nonface- to-face CPM services are furnished during a calendar month. Note that both HCPCS code G3002 and G3003 are both listed on [CMS' List of Telehealth Services](#).
- General behavioral health integration (BHI)
- Remote physiologic monitoring (RPM)¹² – as of Jan 1, 2024
- Remote therapeutic monitoring (RTM) – as of Jan 1, 2024
- Community Health Integration (CHI)¹³ – as of Jan 1, 2024
- Principal Illness Navigation (PIN) – as of Jan 1, 2024

Beginning January 1, 2024, RHCs and FQHCs may also provide Community Health Integration (CHI) and Principal Illness Navigation (PIN) services under the general care management HCPCS code G0511.

Check CMS' [Rural Health Clinics Center](#) for the most current reimbursement rate for G0511.

In the CY 2024 PFS FR (p. 79075), CMS clarifies that RHCs and FQHCs may bill HCPCS code G0511 multiple times in a calendar month for one Medicare beneficiary as long as all of the requirements for each service are met.

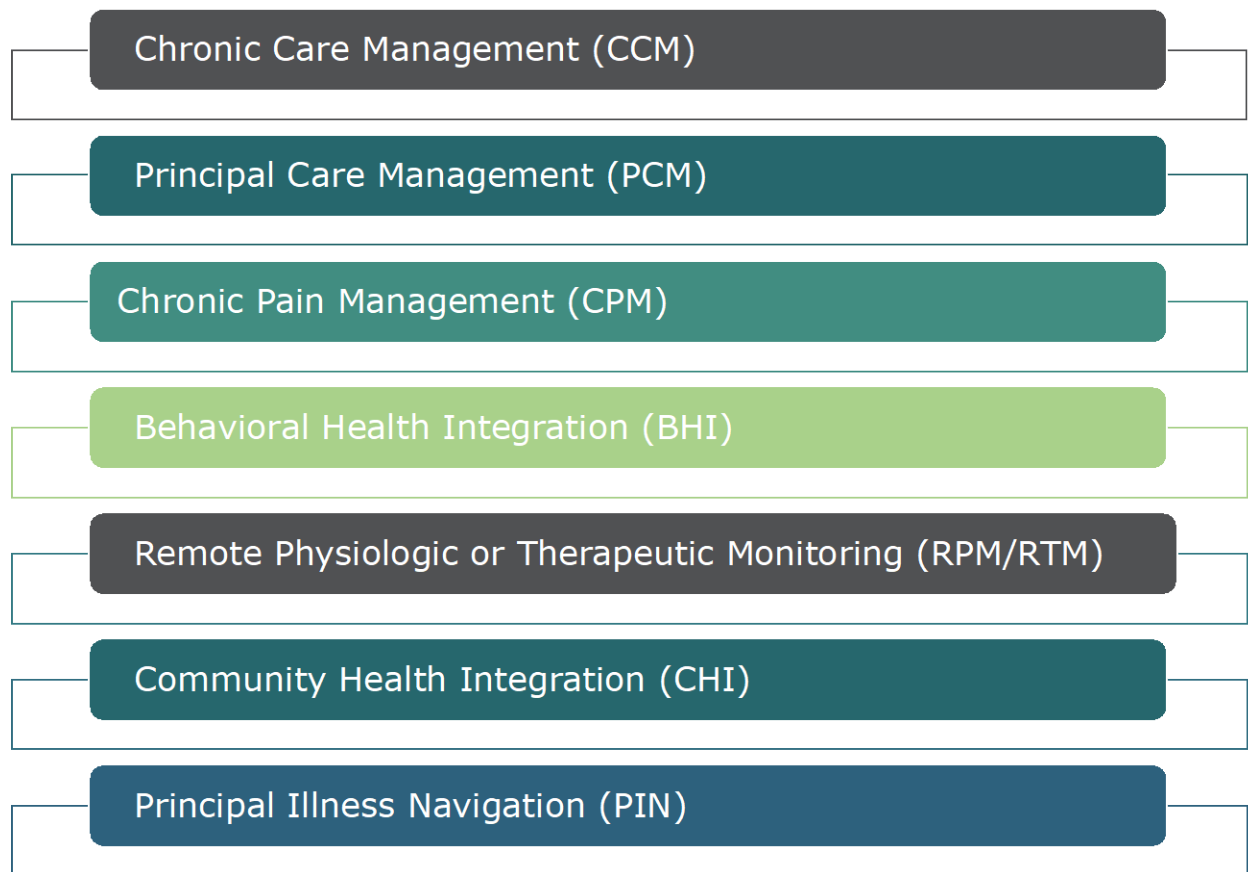
¹¹ CY 2023 PFS FR pp. 69735-37.

¹² CY 2024 PFS FR pp. 79071-73.

¹³ CY 2024 PFS FR pp. 79075.

An in-depth discussion on these opportunities to provide care management and support patients virtually is beyond the scope of this guide; additional details are found in resources below and this resource: [Chronic, Principal & Chronic Pain Care Management Services: Implementation Guidance](#).

G0511 → CCM, PCM, CPM, BHI, RPM/RTM, CHI, PIN



Resources:

1. [Rural Health Clinics Center](#). **CMS**. Check this website for the most current payment rates for G0511, G0512, G0071 and G2025. These rates apply to both FQHCs and RHCs.

2. [Cheat Sheet on CMS Medicare Payments for Behavioral Health Integration Services - Federally Qualified Health Centers and Rural Health Clinics](#). University of Washington AIMS Center. 2019.
3. [Behavioral Health Integration Services – MLN Booklet](#). CMS. Updated March 2021.

Remote Physiologic (or patient) or Therapeutic Monitoring (RPM/RTM).

RPM and RTM are two virtual services with significant potential to reduce ED visits, admissions, and readmissions. For example, Medicare notes that sepsis is a top diagnosis for hospital 30-day readmission rates among Medicare beneficiaries and that monitoring appetite, mental changes, biometrics, etc. through software platforms or apps with virtual daily check-ins to monitor for potential issues can be helpful, especially if specific care instructions and reminders regarding hygiene and medications are included¹⁴. RPM is an excellent addition to self-management support for patients. Beginning Jan 1, 2024, the suite of RPM and RTM services are included in the general care management code G0511¹⁵ that is a billable code for RHCs. Check the online fee schedules of your state Medicaid agency to see if RPM codes are listed as covered services. See [Remote Physiologic and Therapeutic Monitoring \(RPM/RTM\) resource](#) for more details.

There are at least three versions of RPM to keep distinct.

1. RPM, as defined by Medicare, includes five billing codes and has several conditions and requirements. These RPM services require that “the medical device should digitally (that is, automatically) upload patient physiologic data (that is, data are not patient self-recorded and self-reported),”¹⁶ which is not the case for 2 and 3 below.

¹⁴ [Medicare and Medicaid Programs; Policy and Regulatory Revisions in Response to the COVID-19 Public Health Emergency](#). Interim Final Rule. CMS. April 2020. p. 19249.

¹⁵ Calendar Year 2024 Physician Fee Schedule Final Rule (CY2024 PFS FR) p. 79073

¹⁶ Calendar Year 2021 Physician Fee Schedule Final Rule (CY 2021 PFS FR) p. 84543

2. Medicare reimburses for other RPM services (e.g., self-measured blood pressure monitoring and continuous glucose monitoring (CGM) and [ambulatory blood pressure monitoring](#)) that don't technically fall under their RPM definition from 1 above.
3. Remote patient monitoring that may or may not be “physiologic” can be an excellent adjunct for chronic disease and other self-management and may include regular check-ins, reminders, diet logs, and so much more. With the explosion of patient health apps, the possibilities continue to expand, noting that these services may not be reimbursable.

CAHs should be able to bill for specific RPM/RTM codes. For RPM, CAHs should be able to bill codes 99453 and 99454 on the UB-04 and receive cost-based reimbursement. The other three codes are only billable as professional codes. The status indicator assigned to these codes is B (not allowed to be submitted on an outpatient hospital Part B bill type). Professional work could be billed out of the hospital setting if that is where it occurred. As this is outpatient, if Method II, it would be billed on the UB. Method I would be billed on the 1500 form.¹⁷ Check with your Medicare Administrative Contractor (MAC) for confirmation and guidance and see the resource below.

This [Remote Physiologic and Therapeutic Monitoring \(RPM/RTM\) guide](#) – provides additional guidance on implementing the RPM/RTM services and codes.

Virtual Communication Services.

For all three Virtual Communication Services below:

- Use G0071

¹⁷ [CAHs, FQHCs and RHCs, Oh My!](#) See section RPM billed from CAH? 20:00-23:00. Carol Yarbrough, Business Operations Manager, UCSF Medical Center. 2021.

- Obtain consent, which must be documented in the medical record
- Adhere to “7/24” rules: cannot be billed if the services originate from a related Evaluation & Management (E/M) provided within the previous seven days or lead to an E/M service or procedure within the next 24 hours or soonest available appointment
- Must be patient-initiated

Current reimbursement for G0071 may be found using the resource listed below.

1. **Virtual Check-Ins – Phone Call.** Five to ten minutes of medical discussion described as a brief communication technology-based service (audio-only real-time telephone interactions) by a physician or other qualified health care professional who can report evaluation and management services. This is a great option to determine if a patient needs a virtual or in-person office visit.
2. **Store and Forward - Remote Evaluation of Recorded Video and Images.** Includes interpretation with follow-up with the patient within 24 business hours. This option is great for wound management, post-operative follow-up of a surgical site, dermatologic complaints, and more.
3. **E-Visits** are online digital E/M services provided over seven days and are non-face-to-face, digital communications using a secure patient portal. Patients who use this option tend to like it, but use may be limited due to going having to go through the patient portal.

Resources:

1. [Rural Health Clinics Center](#). **CMS.** Check this website for the most current payment rates for G0511, G0512, G0071 and G2025. These rates apply to both FQHCs and RHCs.

2. [Virtual Communication Services in Rural Health Clinics \(RHCs\) and Federally Qualified Health Centers \(FQHCs\) Frequently Asked Questions](#). CMS. 2018. While a bit outdated most if not all information is still relevant.
3. [CMS Virtual Check-In Patient Page](#). CMS. Great information for patients and staff alike.

E-Consults aka Interprofessional Consults. This patient-centered option for referrals for consults is underutilized and is an excellent option for clinicians and their patients living in rural areas, as long as the patient does not need to be seen in person. Medicare does not reimburse RHCs for any interprofessional consultation codes. Still, it is a great option to expand access and serve patients. Consider whether an e-consult is most appropriate for each specialist and ascertain if the specialist is willing to engage in an e-consult. See [Interprofessional Consultation – A Patient-Centered Referral Option](#).

Engaging Key Stakeholders

The list of potential stakeholders that can impact the success of a telehealth program can be long, but this shouldn't be a deterrent to implementing telehealth. Think of stakeholders as potential partners to ensure the success of the telehealth program.

<u>Stakeholders</u>	<u>Considerations</u>
Leadership	Must have engagement through endorsement and commitment of time and resources; include relevant boards.
City, municipal, and county service districts	Because these entities may have a vested interest or even own the CAH, these agencies should be included in discussions to implement and expand telehealth and may be essential partners for finding solutions to limited access.
Staff – clinical and non-clinical	Without buy-in to both the concept and operational aspects of telehealth, success may be in jeopardy.
Vendors	Navigating the technical, functional, and budgetary requirements and concerns can be challenging, as can ensuring that the CAH/RHC needs are met through vendor transparency.
Patients, families, and caregivers	Communicating effectively about telehealth services and how to access those services, paying keen attention to superb customer service, and providing value defined by patients are only a few of the critical considerations.

<u>Stakeholders</u>	<u>Considerations</u>
Specialists and other distant providers	The willingness of these individuals and organizations to provide telehealth services is vital and often needs to be fostered and facilitated.
Medicare, Medicaid & other insurers	Understanding and complying with documenting, billing, and coding are essential for reimbursement, as is communication with the Medicare Administrative Contractor (MAC).
The community	CAHs are an integral part of their community, which has incredible possibilities to support telehealth, primarily to provide a telehealth-ready device with broadband in a quiet, safe space – think about community-based organizations, senior centers, libraries, farm organizations, employers, and more that can be partners in expanding access for patients.
Schools	CAHs can work with schools to implement school-based telehealth to support students, staff, and parents. These programs may decrease unnecessary absences, increase access to care and chronic disease management, provide mental health services, and support school nurses.

Ten Tips for Engaging Stakeholders

Successfully engaging with stakeholders is more than just sending an FYI email. It requires some thoughtful pre-work to lay the groundwork for strong relationships, positive dialogue and partnerships, and continued collaboration to implement, expand and sustain telehealth in CAHs and their surrounding communities.

1. Make an initial list of key stakeholders. Check in with others at the CAH (and possibly beyond) to double-check the list for accuracy and completeness; add, delete, or modify the list based on feedback. Include the entity name and contact information at a minimum.
2. Clarify - on the list and in writing - the stake each has in the potential changes related to telehealth implementation, expansion, or sustainability. There's a reason we call them stakeholders; we should be clear on precisely what stake they hold.
3. Consider adding the current and desired engagement. For example: Do they know about us/the telehealth program? Are we likely to run into resistance from them? Or are they neutral or supportive? What is the nature of support, if supportive (e.g., financial, staff, services)?
4. Identify what it is that each entity needs to know. Are they just being kept in the loop? Will they lose or gain anything? Will they need to make any changes?
5. Consider drafting SBARs for each entity - Situation-Background-Assessment-Request or Recommendation. Putting this information together can also help when reaching out by email. It's possible that a concise one- or two-pager with information would also be helpful.

While SBARs may feel awkward at first, they get easier and quicker with practice.

Short SBAR example – the SBAR headings do not need to be included when sending to stakeholders:

Situation: We are reaching out to find partners who can help provide telehealth access in our community.

Background: We are expanding telehealth services to enhance access and provide more services, especially for our underserved and marginalized populations, and serve those with mental health issues and those suffering from

long COVID. From demonstration projects from around the country, we know that libraries can be an excellent solution!

Assessment: Our community, especially in our rural and underserved areas, needs more access to engage in telehealth. More than 65% of our local community lacks access to adequate bandwidth and a device to engage in telehealth, further widening health care disparities. We know that we have community resources that can provide patients with what is needed to access health services by telehealth.

Request/Recommendation: We would like to partner with the ABC Library to create a safe and private place for patients to participate in telehealth visits. If we provide an iPad with a mic and headphones, are you willing and able to give the space for a safe, private “Telehealth Booth” using your Internet connection?

6. Learn about each entity - do your homework - even if you think you know them. Check their website, if possible, including any information on mission, vision, and values. When you connect with the entity, it shows commitment to the relationship.
7. Choose the right person at the CAH to conduct initial outreach and possibly ongoing communication. Focus on existing connections and relationships and consider titles and positions. Sometimes contact from one CEO to another is essential, even if it is to conduct a warm handoff to a different person at the CAH. When engaging a new specialist, physician-to-physician outreach can be high yield.
8. If possible, keep track of the touches (i.e., calls, emails, meetings) and results in a shared document. For example, “Unable to connect by phone or email after multiple tries.”, “Said yes to purchasing iPad for a school nurse.”, “Gave me a hard NO to request to set up telehealth station in the library.”
9. Manage expectations and be clear about roles and responsibilities. Consider using a [responsibility assignment matrix](#), if appropriate, especially early in the engagements. The RACI (Responsible-Accountable-Consulted-Informed) model is commonly used and

clarifies who is *responsible* for completing tasks, who is *accountable* for completing a task, who will be *consulted* on their opinion or expertise, and who will be *informed* on progress or completion of a task or deliverable.

10. Be organized and be a good communicator! Send short agendas embedded in meeting invites. Take real-time notes using a shared screen, if possible, to keep everyone on the same page. Send a follow-up email with notes and with any action items - who will do what by when. Thank people for and be respectful of their time. Send brief emails; it may be essential to review some emails to stakeholders before they are sent. While this may sound like micromanagement, it is also a way to 1) mitigate risk from poorly worded emails with misinformation and 2) provide feedback and guidance on sending cogent, well-crafted emails that reflect well on the organization.

Initial Steps to Begin or Reassess a CAH Telehealth Program

1. Conduct a telehealth readiness/current state assessment like the NRTRC's Telehealth Program Assessment, [Appendix C](#) (additional options are in Resources below), including but not limited to:
 - Know and assess the range of options for delivery and reimbursement and make early decisions about what is most feasible for the CAH, including any associated RHCs .
 - Assess strengths that are promoters of successful adoption of a telehealth program (e.g., engaged and committed leadership, positive telehealth perspective.)
 - Clarify barriers to implementing and sustaining a telehealth program and identify potential solutions (e.g., insufficient buy-in (staff and patients) or change tolerance, EHR or other system limitations – no telehealth platform, staff challenges, lack of community trust in telehealth.)
 - If partnering with a vendor, consider asking if they have a readiness assessment/checklist, too.
2. Reach out to other CAHs that have already implemented telehealth to learn from their experiences and to explore opportunities to collaborate.
3. Form a telehealth team (See Forming the Team in the [American Medical Association Telehealth Implementation Playbook](#))
 - Select a telehealth and virtual care champion. The telehealth champion is often a clinician but does not need to be as long as the champion is a well-respected leader with a passion for telehealth. Additional practical attributes include good

communication and organizational skills and a track record of being a potent change agent.

- Select representatives from IT, operations, and administration/leadership, if possible, to form the telehealth team
 - Consider adding a member(s) of the community to the team (e.g., (city council, chamber, school board, principal))
4. Clarify, enumerate, and describe possible telehealth opportunities, including estimates of revenue for each opportunity.
- As an originating site – list the services already being received by patients from specialists and others and identify new possibilities by reviewing the complete set of telehealth services and codes that can be delivered .
 - As a distant site – list the services that can be delivered to patients, which may depend on billing Method, outpatient options, and whether RHCs can act as remote sites post-pandemic.
5. Develop a work plan or “punch list.”
6. Assess broadband or connectivity within the physical confines of the CAH and RHC to understand whether the speed and reliability are sufficient to support telehealth. For example, broadband may be adequate, but Wi-Fi is not strong enough in certain rooms, requiring additional nodes. If deficits are noted, the next step is to determine the etiology and look for solutions, which may exist beyond the confines of the physical structure. The Federal Communications Commission identifies a speed of ≥ 25 Mbps download/3 Mbps upload for fixed broadband as a minimum performance benchmark. There are many resources for checking broadband speed, including the speed test option from the Utah Education and Telehealth Network. Where possible, it is good practice to maintain two internet connections to the CAH or RHC from separate telecommunication providers for redundancy. This is especially true when your EHR system is cloud-based.

7. If able/available, assess the broadband capability of the geographic region in which the CAH's attributed patients live.
8. List additional needs and capacity to meet those needs, including but not limited to:
 - Staffing – Note that CAHs are more likely to add new responsibilities than hire new telehealth staff¹⁸.
 - Staff training.
 - Quiet, private, and safe location to engage in a telehealth visit.
9. Identify technology needs – hardware and software, including a telehealth platform – and build a budget to understand anticipated financial outlays, understanding that a device, connectivity, and a solution to ensure audio and video telecommunication are the basic requirements for a telehealth program.
 - Devices – computer on wheels (COW), laptop, or tablet with camera and microphone and speaker (purchase or lease.)
 - Headsets, if needed, for privacy.
 - Telehealth platform – identify technical and functional specifications.
10. Select a HIPAA-compliant telehealth platform.
 - Identify desired technical and functional requirements.
 - Clarify the budget – upfront and ongoing costs.
 - Feedback from the front lines suggests that integration with the EHR, minimizing the need for multiple programs, screens, and clicks, is desired by clinicians. However, if access is challenging for patients (e.g., must download an application or access through the patient portal using the link in an email), uptake may be challenging.

¹⁸ Haque, S, et al. [Factors Influencing Telehealth Implementation and Use in Frontier Critical Access Hospitals: Qualitative Study](#). JMIR Form Res. 2021. 5(5): e24118.

- If the CAH or RHC will only act as an originating site, there is likely no need for a telehealth platform because the care team will interact with providers using their platform. (See Evaluating the Vendor and Contracting in the [American Medical Association Telehealth Implementation Playbook](#)) Even when acting as an originating site only, the CAH will still require a computer/monitor, webcam, speakers, microphone, and connectivity.
 - It may be best to choose well-established telehealth platform vendors.
 - Never purchase a telehealth platform if the vendor is not willing to sign a Business Associate Agreement (BAA), which helps ensure that the platform is HIPAA-compliant and that the vendor is adhering to the HIPAA Security Rule, including the requirement to notify you if they suffer a security incident or breach. (For information on BAAs and definitions, see [Business Associate Contracts – Sample Business Associate Agreement Provisions](#) from the U.S. Department of Health & Human Services – Office for Civil Rights.)
11. Consider internal processes for drafting, reviewing, and approving policies and procedures (P&Ps); existing P&Ps need to be reviewed to include telehealth, and new P&Ps need to be generated as the telehealth program begins. Know how this will unfold and share any changes or new P&Ps as it can be a matter of patient and staff safety.

Resources

1. [American Medical Association Telehealth Implementation Playbook](#). **American Medical Association**. 2020.
2. [Telehealth Readiness Assessment Toolkit](#). **Maryland Health Care Commission**. Thorough and long (54 pages), there is also [an online version](#).

Vendor Selection and Guidance

Below are several considerations when selecting a telehealth platform. Make sure that clinicians and other staff involved in telehealth visits have input into selecting the telehealth platform. (See also the excellent resources in Evaluating the Vendor appendices in the [AMA Telehealth Implementation Playbook](#) pp. 90-100.)

1. **Clarify technical and functional requirements as well as budget constraints**, including but not limited to:
 - EHR integration – This can be an essential factor for clinicians. However, if it is convenient for clinicians and staff but inconvenient to connect for patients, they will not engage in telehealth.
 - Multiple participants can sign in at the same time to join a visit. Some free or reduced cost solutions only allow two connections to the telehealth visit, which is not ideal if the care team is working virtually or essential for other individuals to join (e.g., specialist, family, and caregivers.)
 - Interpretation services – Some vendors have slick solutions to provide interpretation, but feedback from the field indicates that there are currently opportunities for improvement.
 - Workflow to access the telehealth visit – The patient workflow is one of the most important predictors of uptake! If accessing a telehealth visit requires a patient portal and email address, this may exacerbate health inequities and curtail use. It should be easy, or at least easy to learn, for the patient.
 - Online web link without the need to download an app/software – The option to have a URL for access is more straightforward than performing downloads and updates.
 - Technical support – If the CAH or RHC has a strong, readily available, capable IT team or telehealth coordinator/director, technical support may not be as important.

- Know whether the vendor can/will provide support for patients and be clear on exactly what that entails – real-time as needed or by appointment only or something else.
- Initial and ongoing costs – This information can usually be obtained online. Still, vendors can use proprietary information and require contact information before sharing fees, leading to aggressive follow-up and marketing.
2. **Choose an initial five to seven established vendors.**
 3. **Compare functional and technical requirements as well as cost and ongoing fees** among the top contenders.
 4. **Schedule a demo if needed.** Vendors often show the best features – the bells and whistles. A few tips on demos include:
 - Ensure that it is not a canned demo and that the team has ample time for questions and requests
 - Have a list of features the team wants to see and be prepared with the top eight to 10 questions; try not to ask YES/NO questions (e.g., Do you have interpretation services vs. Please demonstrate how we arrange interpretation services.)
 - Invite clinicians and other staff to the demo
 - Create several scenarios to see (e.g., scheduling, patient notification of appointment and sign-in information (email, text?), a process for a patient sign-on, process for clinician sign-on, support (if any) for real-time documentation, in-session communication options for patient and care team (chat?), interpretation (the team does not want to figure out the process and kinks later or on the fly))
 - Schedule an immediate post-demo debrief. (consider a standard rubric for scoring or evaluating the vendor and the platform.)
 5. **Contracts** (See also Contracting in the [American Medical Association Telehealth Implementation Playbook](#))

- Involve the legal team/experts early in the process.
- Secure approvals early in the process and know who needs to approve any contracts/negotiations.
- Understand whether any patient protected health information is stored at any time by the vendor as this poses potential security risks and needs a plan for disposition if/when the contract ends (for whatever reason.)
- Require documentation that the solution is HIPAA-compliant and append to the contract.
- Know the details if leasing any equipment as well as keeping software and hardware updated.
- Sign a business associate agreement.
- Have clear language on conditions for canceling; know the time needed to provide notice and whether payments will continue beyond the cancellation date.

Adoption & Sustainability – Key Factors

Several key factors contribute to the success of telehealth programs, including but not limited to buy-in, infrastructure and cost, provider availability, and more¹⁹. Below are several critical considerations with recommendations to help ensure a smooth implementation and adoption.

Buy-In

Without buy-in from staff and patients, it may be impossible to implement and sustain telehealth.

- Listen to what staff say about telehealth and understand what their telehealth perspective is. It's a plus when staff generally have positive "telehealth talk." It is a good sign if staff see telehealth as a permanent option going forward rather than a stopgap until the COVID-19 pandemic is over. There's also a big difference between "We can do telehealth if..." and "We can't do telehealth because..."
- Include staff in the implementation plans.
- Recognize that change can be difficult.
- Assess the engagement and commitment from leadership as their support is one of the keys to success.
- Clearly, define and share the expected resources that are needed, including the estimated budget.
- Outline goals of the telehealth program and how it will contribute to the organization.

¹⁹ Haque, S, et al. [Factors Influencing Telehealth Implementation and Use in Frontier Critical Access Hospitals: Qualitative Study](#). JMIR Form Res. 2021. 5(5): e24118.
Ward, M, et al. [Use of Telemedicine for ED Physician Coverage in Critical Access Hospitals Increased after CMS Policy Clarification](#). Health Aff. 2018. 37(12) 2014; 12(6): 2037-44.

- Demonstrate alignment of telehealth with the mission, vision, and values of the CAH and RHC – enhancing access, serving patients and the community, being person-centered, providing excellent care services, etc.

Financial Considerations

Implementing and sustaining telehealth is often less expensive than anticipated. The primary financial outlays include but are not limited to:

- Staff – In general, organizations do not need to hire additional staff to implement telehealth and usually provide existing staff with training. However, several organizations are hiring telehealth directors or coordinators to ensure continued efficiency and use.
- Staff training – There are ample free, online telehealth training opportunities, but attending them and learning on the job does take time, and time can be costly. The [California Telehealth Resource Center Telehealth Course Finder](#) is a great place to start and includes the host of the training, information on credits, and cost if any.
- Fees for the initial purchase and ongoing maintenance/service for the telehealth platform. Plan for updates and ensure the equipment is on a routine update schedule; double-check the technology after updates are completed for new or changed functionality to ensure smooth operations with no unpleasant surprises or hiccups during telehealth visits.
- Revenue – Although the reimbursement is small, [originating site fees](#) can add up. Revenue for performing distant site services depends on staff with the requisite training, licensure, and credentials. Review the [Telehealth Services and Codes Table](#) linked in the appendices to identify potential revenue-generating services that the CAH and the RHC can deliver.

Leadership and Staff Engagement & Education

Leadership endorsement and commitment are essential. If leadership is not entirely convinced with moving forward with a telehealth program, the program may be doomed. For guidance on making the case to leadership, see Making the Case in the [AMA Telehealth Implementation Playbook](#). Leadership demonstrates engagement by signaling a desire to be included and updated with the planning, dedicating the staff, time, and finances needed to launch and sustain the program, ensuring that telehealth is on meeting agendas, talking to people at the front lines to understand buy-in and other vital factors, and reaching out to colleagues to learn best practices, etc.

Information technology (IT) staff may need to master additional skills to support telehealth. If the CAH/RHC has insufficient or part-time IT staff, other staff may need to take on new roles and responsibilities. Some organizations are now seeking telehealth directors or coordinators either as a new position or to add to existing staff roles and responsibilities. Roles and responsibilities include but are not limited to:

- Act as telehealth champion and telehealth team lead.
- Take responsibility for all external-facing telehealth communication and promotion (i.e., website, social media.)
- Be available in real-time to assist clinicians, the care team, patients, and others as tech support to ensure smooth and effective telehealth visits.
- Collaborate with HIPAA Security Officer to ensure all telehealth-related risks are identified, addressed, and mitigated for the security risk analysis.
- Ensure that all devices used for telehealth have a microphone and camera.
- Assess and troubleshoot broadband availability in general to the extent possible and ensure connectivity in areas where telehealth visits occur for the organization either as distant or originating sites (e.g., install additional nodes.)

- Work with the community to identify places where patients can engage in telehealth (e.g., library, senior center, employers.)
- Communicate with telehealth platform vendor when needed.
- Address patient barriers to and solutions for engaging in telehealth.
- Create cheat sheets, create/modify EHR templates to support telehealth and telehealth documentation.
- Assist in workflow mapping and process improvement related to telehealth and virtual services.
- Ensure structured data capture for key telehealth parameters (e.g., billing codes, no show rates, clinical quality measures, types of visits – audio and video/audio-only, completed vs. incomplete visits.)
- Act as telehealth subject matter expert.
- Work with senior and billing/coding staff to ensure the organization is current on regulations and requirements.

Staff. Training should be in place for all staff until each has reached an acceptable level of proficiency with the technology, workflows, techniques, documentation, requirements, etc. While there are several online training options, some training is specific to the organization. Consider these elements for training.

Triage protocols. Written triage protocols, usually symptom- or condition-based, that are easily accessible by all staff on which patients or patient issues are appropriate for telehealth and which need to be seen in person.

Technology and troubleshooting. Specific to the organization, staff should know how to navigate the technology and troubleshoot when issues arise during the telehealth visit.

HIPAA Privacy and Security. As noted in the relevant section of this guide, privacy and security training is essential. Some say it is not a matter of *if* but rather *when* an organization will have a security incident or breach. Well-trained employees provide a good measure of prevention and risk reduction.

Telepresenting. If staff will telepresent, they can be trained internally by clinicians to a certain extent. Still, there are formal telepresenter training programs available that are easily found with an online search.

Coding and billing. This is a complex and essential aspect of required telehealth expertise, as noted in other places of the guide. Again – there are online options for this training, but it is not too complex for a dedicated individual to grasp the details and stay current.

Consent. Many organizations gloss over and do not adequately document consent. Each staff member involved in telehealth visits and other virtual services needs to know whether consent must be obtained, how often it needs to be obtained, how it should be documented, who can obtain it, and what the requirements are based on patients' insurance and/or visit type.

Workflows. Many organizations implement standard workflows but fail to ensure 1) that staff knows the workflow and 2) are using the established workflow, either of which can compromise the safety, quality, efficiency, revenue capture, and patient experience. Ensure workflows are mapped and readily available to staff. Perform spot checks or measure to ensure workflows are being followed.

Patient safety. Part of the training should include how to keep patients safe. See also the [Patient Safety](#) section of the guide.

Documentation. All staff should be trained on any telehealth-related documentation to ensure patient safety, quality, and revenue capture. Otherwise, documentation is the same as for in-person visits. See also the [Documentation](#) section of the guide.

Person-Centered Telehealth

Engagement & Education

Promote telehealth. Patients need to know that telehealth is an option. Here are a few high-leverage ways to get the word out.

Staff, clinicians, and patient partners. Messaging from clinicians and staff is vital! Often it begins with a call to schedule an appointment. Reception staff should offer either telehealth or in-person visit to everyone calling for an appointment. Clinicians can promote telehealth during an in-person visit. “Next time, if you don’t want to drive to the clinic for a visit, we can do a telehealth visit if it’s easier for you.” The CAH/RHC can also enlist patient partners to promote telehealth by offering testimonials, joining select patient calls, and including in newsletters or convenings.

Website and on-hold message. Promote telehealth on the CAH/RHC website with need- or good-to-know information. Include telehealth as an option on the on-hold message.

Provide exceptional customer service. This is an essential key to success. Have a plan for accomplishing this, know the individual(s) who will be responsible, and measure to ensure exceptional service (e.g., satisfaction survey).

Assess and improve digital proficiency. Many patients avoid telehealth because they are unfamiliar with the technology, online experience, or electronic navigation required for a telehealth visit. Conduct test visits with patients so they can become more proficient and comfortable with the digital knowledge and skills to participate in a telehealth visit. This can help alleviate patients’ apprehension about an upcoming medical appointment and reduce stress for those unfamiliar with telehealth.

Identify and address health inequity. Telehealth expands access but can also exacerbate health inequity. Whenever possible, identify and address barriers to engaging with telehealth. Below are several well-known barriers with some potential solutions. Each CAH/RHC will have specific solutions as well.

Health Equity - Barriers and Potential Solutions

As noted above, while telehealth can expand access, it also exacerbates health inequity. Virtual care teams are part of the solution to ensure equity by helping patients access and engage in virtual health care delivery. Lack of access to virtual care services and telehealth should be considered a social determinant of health, documented as structured data, and addressed through innovative and creative ways.

BEST PRACTICE: Ensure that all individuals have the same access and support to engage in virtual care and telehealth.

One of the most innovative, person-centered, and community-based options can enhance access and equity by finding community-based solutions for individuals. The CAH/RHC can convene potential partners and build a community network to support individuals' access to and use virtual care and telehealth. To engage in telehealth, patients need the following:

- Private, quiet, safe space.
- A device with a camera and microphone.
- Stable internet with adequate bandwidth.
- Someone to help with limited digital proficiency

Unfortunately, too many people do not have some or all the above. Envision and execute community-based solutions; likely partners include libraries, senior centers, places of worship, employers, community centers, homeless shelters, and more. Below is a starter set of barriers and

potential solutions; add/modify the barriers and possible solutions below specific to the CAH/RHC, location, and patient population.

Connectivity – lack of internet connection or data plan.

- Identify federal or state programs to help pay for internet (e.g., [FCC Lifeline Support for Affordable Communications](#) or [Affordable Connectivity Program](#), [EveryoneOn](#), [National Digital Inclusion Alliance](#))
- Provide prepaid phones
- Dispense prepaid data or internet/wireless service cards
- Provide mobile hot spots
- Work with the local partners to find community-based solutions that can provide connectivity and more (e.g., library, senior center, places of worship, employers)

Connectivity – lack of broadband in patient’s location.

- While this may be a difficult barrier to overcome until reliable, high-speed broadband is available in the patient’s location, consider lack of broadband as a social determinant of health and document as structured data for future reference (e.g., we do not keep offering telehealth visits if in the same location) and for possible reports.
- Develop a broadband availability map using available sources for most of the geographic area served by the health center.

Lack of phone/data plan to talk on the phone.

- Provide prepaid phones and data plan cards.
- Call patients at the beginning of the month/cycle when they are likely to still have minutes – with their permission to use those minutes for the call, we are making.

- Use a mobile or landline phone at a community-based option. We already have many audio-only options to support patients, including chronic and principal care management, behavioral health integration, the Collaborative Care model, virtual check-ins, and more. Most people have phones, but not everyone does, nor does everyone have a data plan that allows them to engage in virtual care services.

Lack of reliable transportation.

- Have a list of transportation options with the cost for patients to travel to the CAH/RHC or other originating site locations.

Lack of device with camera and microphone.

- Have staff deliver the device to patients' homes (and help with navigating technology.)
[Off-Site Video Collaboration](#) (three-minute video on how this can work.)
- Consider a mail-to-patient option that provides an easy opportunity for the patient to return the device.
- Direct the patient to community-based locations that have agreed to help/host with telehealth visits.

Low digital proficiency.

- Offer practice virtual visits.
- Make allowances (e.g., more time) – reassure the patient that it will get easier with time.
- Send clear, easy-to-read/understand instructions in advance by mail.
- Provide training if the patient is interested.
- Send staff (e.g., community health worker, promotora) to the patient's location to help navigate technology.

- Direct the patient to nearby community-based locations that have agreed to help/host telehealth visits.
- Ask if family/caregivers can help.

Cognitive impairment and those with intellectual/developmental disabilities.

- Request having family/caregiver join.
- Consider whether virtual service is the best option if a patient can make it to an in-person visit.
- Speak slowly and clearly – send post-visit notes and treatment plans by mail.

Language/translation needs.

- Know and connect with translation services; have arranged and ready to go at the time of call.
- Arrange American Sign Language (ASL) translation services for individuals who are deaf, when appropriate and available
- Note that this can be a significant barrier, and depending on the patient population, arranging and coordinating translation services can be complex and time-consuming
- [How to Ensure Quality Language Translation and Interpreting in Medicine](#) – Excellent information from the Arizona Telemedicine Program April 2021

Hearing-impaired

- Speak clearly and help the patient turn up the volume; ask the patient if speaking louder is helpful.
- Ensure the patient has a headset with a noise-canceling feature to block out ambient noise; send the patient a headset if they do not have one.

- Check with the patient beforehand if telehealth is the best option and what other accommodations can be made.

Private, quiet place that is safe.

- Talk to the patient about safe options, and if there are none, the team may need to accommodate the best the patient can do.
- If possible, direct the patient to nearby community-based locations that have agreed to help/host telehealth visits.

Unhoused Individuals.

- Bring the device to people who are unhoused to engage in telehealth visits. (Recognizing that some patients may distrust technology or have privacy concerns, make sure patients can clearly see your credentials and check in frequently on the patient's comfort level.)

Patient Safety

There are several potential patient safety issues with telehealth or calls, which can be mitigated with care.

Emotional and mood cues may be missed. Because communication is different with telehealth or calls and may not include a video component, facial cues are blunted, and providers/care teams may not see distress, tears or other emotions if not using video.

Diagnoses may be missed or delayed. Telehealth is not always the right choice. Comprehensive physical exams cannot be conducted that could reveal a serious condition. Some workflows for remote services have shifted established workflows away from how things are done for in-person visits, which may lead to patient safety issues. For example, it is more challenging to deploy team-based care virtually to conduct pre-visit planning and huddles to identify and address preventive

and chronic gaps in care. Some states and other regulations require periodic in-person visits or that patients are seen in person before initiating telehealth visits to ensure patient safety, accommodate physical exam findings, including those that are impossible with telehealth (e.g., smell), foster connection, strengthen therapeutic relationships, and more.

There is a potential increased risk for domestic abuse. While one hopes that this never happens, some patients are at risk for domestic abuse due to potential abusers hearing part or all of the virtual visit. Additionally, patients, including children, may not have the privacy to let a provider or other staff know if they are neglected or abused. See this article for additional guidance: [Responding to Intimate Partner Violence During Telehealth Clinical Encounters](#).

Know the physical location/address where the patient is. Suppose emergency medical services need to be called for the patient. In that case, it is a crucial aspect of patient safety to know and document the specific location of the patient and any numbers relevant to their site (e.g., home, library, car). See also this article: [3 Tips for Using Telehealth for Suicide Care](#).

Communication & Support

Communication among everyone involved in telehealth processes is critical for success. A few best practices include:

- Mapped communication tree or table to identify who needs to know what, when, and how (e.g., CAH-RHC communications, staff, departments, revenue cycle team, IT, etc.)
- Readily available cheat sheets for troubleshooting - who to call, how to bill, etc.
- Reliable resource or number to call for help with the telehealth visit.
- Information exchange can be a barrier when facilitating telehealth visits. Best practices include:
 - Only exchange information electronically in compliance with the HIPAA Security Rule (i.e., encrypted.)
 - Adhere to the minimum necessary component of the HIPAA Privacy Rule and only share information that is required to complete the telehealth visit.
 - Use e-faxing when possible, and if HIPAA-compliant.
 - Know which providers may have access to the electronic medical record (EHR) to access patient information.

Workflows

Workflows can either make or break a telehealth program! Workflows ensure that work is done in a standard and efficient way, creating a system-based approach or solution rather than relying on a few people working harder and smarter to ensure a successful telehealth program that works for everyone. See [Appendix B – Sample Telehealth-Related Workflows](#) and the resources below for examples of workflows. As with in-person visits, having standard, efficient workflows are key to ensuring that virtual visits that run smoothly and patient safety is prioritized. As virtual visits are

being implemented, consider forming a small team of two to three individuals responsible for establishing, mapping, fine-tuning, and continuously improving workflows, especially those that impact quality, safety, efficiency, or patient/staff experience.

Feedback from the field suggests that it is essential for each department, team, staff member, etc., to know exactly *where* to find the workflows that pertain to them. People should not have to search for workflows; regardless of whether they are paper or electronic, the workflows should be adequately labeled and accessible.

Find a solution for pre-visit planning and huddles. Unfortunately, some telehealth or virtual visit workflows no longer include pre-visit planning to identify and address chronic and preventive gaps in care, which is a risk management and patient safety issue. The care team must establish a standard process to identify and address gaps in care. Huddles are a well-established practice in primary care that is the antidote to chaos in clinic, inefficiency, and missed opportunities (i.e., we saw them in the clinic and neglected to address an issue and chronic or preventive care that was due). Some huddles are held clinic-wide, and others may be held between the clinician, an MA, nurse, or others on the care team – use the [link to primary care example](#). Huddles are also used in the hospital setting. See the hospital example [here from Kaiser Permanente](#).

Many teams have found asynchronous ways to huddle. If huddles are used to convey information specific to a particular group and do not include patient information, email works well, as do other bulk messaging options. Include in huddles who is on the team today and where they are located. Each organization needs to find a solution that works for them and their staff concerning available resources.

Identify and address gaps in preventive and chronic care. Unfortunately, this important piece of primary care service delivery is often skipped with telehealth, placing the patient at risk for missed and delayed diagnoses and services.

Clarify who will document what in the patient chart and how while optimizing team-based care. The provider needs to complete the history of present illness (HPI) (or confirm what another team member has entered for the HPI), document physical exam findings, develop the assessment and treatment plan, and prescribe medications. Recognizing that the provider has complete responsibility, any other aspect of the visit may be delegated to someone else on the team as long as it complies with federal, state, local, and organizational regulations, requirements, protocols, etc. Of course, the individual must also have the requisite skills, licensure, training, and comfort level.

Streamline all patient-facing workflows – test and test again to ensure everything is as easy as possible for patients to schedule and participate in a telehealth visit. In some cases, workflows are not easy to modify. For example, for teams using certain EHRs, patients need to have an active patient portal account to participate in telehealth. This may be an issue for patients without an email address and is a health equity issue.

Identify situations where handoffs are likely to occur and outline the step-by-step process. Ensure that the process does not leave a provider or care team member without an option to keep working. For example, handing a device during a telehealth visit from a provider to a behavioral health specialist without another opportunity for the provider to keep working or see the next patient is not ideal. See Workflow 4 - Sample Warm Handoff to Behavioral Health Team Member in [Appendix B – Sample Telehealth-Related Workflows](#)

Resources

1. [Remote Visit Workflow](#). **Center for Care Innovations**. Nicely done example.
2. [Telehealth and Telephone Visits in the Time of COVID-19: FQHC Workflows and Guides](#). **Center for Care Innovations**. Also applicable to RHCs.
3. [Telehealth Workflows](#). **California Telehealth Resource Center**. Several well-done telehealth workflows.

4. [Mapping and Designing Telehealth Clinic Workflows](#). National Telehealth Research Center. 47-minute instructional video
5. [What is workflow?](#) Agency for Health Care Research and Quality. Basic information on workflows.

Billing & Reimbursement

The importance of implementing telehealth in rural communities seems like a foregone conclusion, but billing correctly to receive reimbursement is a critical factor. While complex, once the details for each service and insurer are established, it is just a matter of updating the information as needed. This may require some research and communication with payers.

Medicare billing requirements and details for telehealth services are the same across the country.

There are readily available resources, and when in doubt, CAH/RHCs can contact their MAC.

Each state Medicaid agency and health plan has its specifications for telehealth.

CAH/RHCs can act as an originating site, provided they meet the geographic requirements. See [Originating site](#) above for additional details.

For example, [reimbursement for code Q3014](#) (*Telehealth originating site facility fee*) is set annually by CMS, and for CAHs, the payment is 80% of the fee. The originating site facility fee helps defray the CAH's costs of supporting the patient to participate in a telehealth visit (e.g., clinical staff, supplies, and equipment/technology). It is a separately billable Part B payment (see Originating Site Facility Fee Payment Methodology on pp. 149-52 [Medicare Claims Processing Manual Chapter 12](#) for additional CAH-related specifics, including originating site fees for renal dialysis centers). "If a distant site practitioner furnishes a telehealth service to a registered hospital

outpatient, and hospital staff provides administrative and clinical support, the hospital may bill for the originating site facility fee (Q3014).”²⁰

Distant site practitioners billing telehealth under the critical access hospital (CAH) Optional Payment Method II must submit institutional claims using the GT modifier. If you’re located in, and you reassigned your billing rights to, a CAH and elected the outpatient Optional Payment Method II, the CAH bills the MAC for telehealth. The payment is 80% of the Medicare PFS distant site facility amount for the distant site service.

“There are two situations in which an institutional facility may bill for **distant-site services**: (1) the facility is a CAH that elected the Method II payment option (Method II payment option for outpatient professional services allows the CAH to be paid 115 percent of what would otherwise be paid under the Medicare physician fee schedule) and the practitioner reassigned his or her benefits to the CAH, or (2) the facility provided medical nutrition therapy (MNT) services.”²¹

For eligible providers who have reassigned billing rights to a CAH that elected for the Method II payment, the CAH may bill for telehealth services on an institutional claim using the GT modifier (via interactive audio and video telecommunications systems). The payment amount is 80% of the Medicare Physician Fee Schedule (PFS) for telehealth services. Follow local Medicare Administrative Contractor (MAC) guidance on billing. Additionally, check state-specific allowances and limits for telehealth services, billing, and reimbursement for Medicaid beneficiaries.

When researching state Medicaid agency telehealth allowances at [CCHP](#), consider the following (also for other insurers):

²⁰ COVID-19 Frequently Asked Questions (FAQs) on Medicare Fee-for-Service (FFS) Billing. CMS.

²¹ CMS Paid Practitioners for Telehealth Services that Did Not Meet Medicare Requirements. Department of Health and Human Services Office of Inspector General. April 2018

Service parity. Are all of the codes covered by Medicare listed in the [CMS' List of Telehealth Services](#) reimbursed by the state Medicaid agency? If not, which ones are covered, and are there any stipulations?

Payment parity. Are the codes/services reimbursed at the same rate as the same visit provided in person?

Distant site. Can the CAH or RHC act as a distant site? If yes, are there any restrictions or conditions?

Originating site fee. Does the state Medicaid agency reimburse the CAH and the RHC for Q3014 and, if yes, how much is the reimbursement?

Consent. What are the specific requirements for obtaining consent for telehealth services? Medicaid requirements are sometimes more complex than what is required by Medicare.

Audio-only. Are there any provisions for reimbursement for audio-only visits?

Remote physiologic (patient) or therapeutic monitoring (RPM/RTM). Many state Medicaid agencies do not currently reimburse for the RPM/RTM codes, but it is worth checking as some do.

Many private payers follow Medicare, but it is essential to check individual health plans' details regarding which services they cover, how much the reimbursement is, and specific billing or documentation requirements.

Resources

1. [Telehealth](#). **Noridian Health Care Solutions**. This is an excellent summary with concise billing guidance, including for CAHs. You can choose your specific jurisdiction, but the information is the same.
2. [Telehealth Expansion Benefit Enhancement Under the Pennsylvania Rural Health Model \(PARHM\) – Implementation](#). **CMS**. Updated Dec 2020. This information may only be relevant to select CAHs that submit claims under the PARHM.
3. [Information for Rural Health Clinics](#). **CMS**.
4. [Billing for Telehealth Encounters – An Introductory Guide on Fee-for-Service](#). **Center for Connected Health Policy**.

Documentation

Documentation for telehealth visits requirements is mostly the same as for in-person visits. Still, it should also include that the visit was conducted by telehealth, patient consent, locations of the originating and distant sites, start and stop times, names and roles of all individuals participating or observing at the originating and distant sites, back-up and emergency plan if the technology fails or patient requires emergency medical services (EMS), and if treating a minor, documentation that parent/guardian was present.

- Consider creative ways to complete and document the physical exam and vital signs. For example, some clinicians have the patient use stairs to check breathing.
- Know what needs to be documented for the type of visit (same as in-person visits, mostly) but see the list above.
- Know where the documentation will occur – directly in the EHR, in a document, on paper, etc.

- Who will document - clinician, scribe, cross-trained MA?

Virtual Care Team Considerations

Recognizing that care teams will almost certainly be working virtually, here are a few considerations to ensure the virtual care team members have the essentials needed to do their jobs.

Virtual Care Team – Essential Tools of the Trade. High-performing virtual care teams need a shortlist of essentials to be successful. Consider how best the CAH/RHC can provide the following:

Laptop/mobile device. If the virtual care team is working from home or another offsite location, they need a mobile device provided and maintained by the CAH/RHC. This creates a security risk if devices are lost or stolen, but there are safeguards to put in place, which is an essential tool.

Access to the electronic health record. To be effective, the virtual care team needs access to patient information, recognizing the inherent technical, security, and privacy issues. Providing secure access through a virtual private network (VPN) may be a solution, but IT staff will know the best way to accomplish this.

Privacy screen. When virtual care teams work from home, there is always the risk that friends or family can see a patient's information. Providing a privacy screen for the monitor/screen prevents purposeful or inadvertent viewing of patient information.

Teleconference and videoconference capability. One solution may cover both requirements (e.g., Zoom).

Reliable, high-speed broadband. For interacting with patients and the rest of the virtual care team, a reliable connection is a MUST.

Strong phone connectivity. This is a perennial problem in rural areas, and while 5G holds promises, it is not here yet. Solutions include boosters, using an internet-based phone solution (e.g., WhatsApp) if the internet is adequate, or having the team member work in a place with better phone service if the home is not an option.

Readily available technical support. Some organizations have strong IT teams that can provide tech support, while others may have that one individual who just seems to have the knack for finding solutions. Either way, the team needs to have support when the technology is not working.

Care Coordination with Telehealth & Care Management

Perhaps one of the most exciting possibilities is supercharging care coordination with telehealth and other virtual services. The following are intriguing ways to enhance care coordination for Medicare beneficiaries. Check with state Medicaid agencies and other health plans for coverage of these and other services. Some state Medicaid agencies may require in-person visits to be reimbursed.

Transitional care management (TCM). There are two codes, and due to poor utilization of these services, CMS has increased reimbursement. See CMS' [Transitional Care Management Services MLN Booklet](#) for full details. This is a great way to support patients for post-discharge follow-up when travel can be challenging for the patient *and* to receive reimbursement by providing these services through telehealth visits. Imagine a TCM visit that includes CAH staff, the patient and family/caregiver, the primary care provider (PCP), pharmacist, home health aide, specialist, and a nurse or MA! Timely and appropriate post-discharge visits can reduce ED visits and 30-day readmissions, making this an attractive option. The CAH may provide these services or ensure the patient is scheduled – either in-person or by telehealth – for a TCM visit during discharge planning.

Telebehavioral health and substance use disorder. There are many telehealth and virtual options for providing virtual services for those with acute and ongoing behavioral and mental health issues; the same is valid for supporting and coordinating individuals with substance use disorder. Check the [Telehealth Services and Codes](#) table at the NRTRC for the relevant codes for these services.

Chronic and principal care and chronic pain management (CCM/PCM/CPM). These codes and services are a mix of chronic disease management, care management, and care coordination, depending on patients' needs for those with two or more chronic conditions or chronic pain. PCM is specifically for patients with one chronic severe condition expected to last between three months and one year, or until the death of the patient, which **may have led to a recent hospitalization** and place the patient at significant risk of death, acute exacerbation/decompensation, or functional decline”²². See [Chronic, Principal & Chronic Pain Care Management Services: Implementation Guidance](#) for additional details.

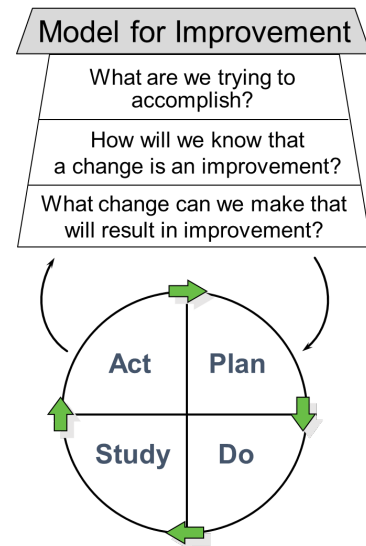
Remote physiologic (or patient) or therapeutic monitoring (RPM/RTM). See [RPM discussion above](#) and the NRTRC [Remote Physiologic and Therapeutic Monitoring \(RPM/RTM\) resource](#) for more details.

²² CY 2020 Physician Fee Schedule Final Rule published November 15, 2019.

Quality Improvement & Quality Assurance

As health care moves closer to the value-based care (VBC) model, it is clear that VBC is inextricably connected to population health, empanelment, and quality improvement. Improving the community's health through empanelment for RHCs and by attribution for CAHs may be a new concept. Because telehealth can have some impacts and unintended adverse consequences on VBC, it's essential to look at how telehealth impacts:

- **Population health and in-reach/in-person and outreach efforts** to identify and address chronic and preventive gaps in care as well as care management needs.
- **Empanelment to**
 - Assume responsibility for the target population/empaneled patients.
 - Ensure their health care needs are met regardless of whether they seek care.
 - Know (and reach out to) those individuals who may be unseen or unknown.
- **Quality improvement and critical outcome and process measures** that affect quality, safety, efficiency, cost, patient experience, equity and work-life of staff.



Quality Improvement (QI)

“Every system is perfectly designed to achieve exactly the results it gets.” ~ Arthur Jones²³ This quote encapsulates why health care organizations take QI seriously, although some are more successful at it than others.

From a performance improvement standpoint, consider a set of process and outcome measures aligned with the CAH/RHC goals. In addition to satisfaction surveys, clinical quality measures, and other measures, consider the suggestions below.

- Percent of encounters that are telehealth visits vs. in-person visits
- Percent of visits that start and end on time – include reasons why visits did not start or end on time (e.g., provider running late, patient not ready on time, appointment time too short to cover issues, questions, and concerns)
- Successful completion rate of telehealth visits and reasons for unsuccessful completion of the visit (do not include any no-shows)
- ED visits, admissions, and readmissions rates over time
- Clinical quality/other measures (e.g., vaccine and cancer screening rates, AICs, blood pressure control)

Quality Assurance

Each person should have the same high-quality telehealth experience, regardless of several variables (e.g., workflows, devices, clinicians, support staff). Create a process to collect, collate and respond to questions/items related to telehealth. Below is a starter set of questions to assess the patient, clinician, and virtual care team experience.

²³ Attribution is disputed. Like Magic? (“Every system is perfectly designed...”). Institute for Healthcare Improvement. 2015. <http://www.ihl.org/communities/blogs/origin-of-every-system-is-perfectly-designed-quote>

Surveys help identify issues, but the best way to ensure quality assurance is to have a tele-partner, who is skilled at telehealth, attend and observe a few telehealth visits per clinician/care team and provide suggestions for improvement following the visit – or plus, minus, delta → What went well? What did not go well? What should/could change? Nota bene – This does require a degree of trust.

BEST PRACTICE: Keep surveys short, focused, and easy to complete. Sometimes just asking two simple questions is all that is needed.

“How was your visit?”

“what could have gone better?”

Patient Telehealth Satisfaction Questions	Possible Responses
Overall, I am satisfied with my telehealth visit.	<p>Strongly disagree (1)</p> <p>Disagree (2)</p> <p>Agree (3)</p> <p>Strongly agree (4)</p>
The process to sign on and begin the telehealth visit was easy.	
The visit started on time.	
The clinician’s credentials were displayed.	
The clinician and other team members introduced themselves.	
I could see the clinician.	
The clinician listened carefully.	
The clinician explained things in a way that was easy to understand.	
What could have gone better?	Free text box

Clinician Satisfaction Questions	Possible Responses
The telehealth visit went smoothly; I had the support I needed for any glitches.	<p>Strongly disagree (1)</p> <p>Disagree (2)</p> <p>Agree (3)</p> <p>Strongly agree (4)</p>
The visit started on time.	
The virtual care team performed well and completed all pre-visit tasks.	
What could have gone better?	Free text box

Legal and Risk Management Considerations

Credentialing and licensing. Here is a checklist for CAHs to consider that may impact telehealth service delivery.

- Ensure that every provider of telehealth to a CAH patient is:
 - Working within their scope of practice, which may be defined by the CAH, local, state, and federal requirements
 - Licensed in the state of the originating site (where the patient is) or that licensing reciprocity or a compact is in place
- Know the state, local, federal, etc. considerations in cases of [delegated credentialing](#) that may surface around telehealth and other virtual services delivery by providers
- Understand cross-state licensure requirements by checking [this page from Telehealth.HHS.gov](#). Many states participate in interstate compacts, but each CAH/RHC should know the requirements if they will provide distant site services to Medicaid beneficiaries and other patients in another state.
- Know whether advanced training is required for delivering telehealth. For example, in Washington, all providers except MDs and DOs must take an approved telehealth training course.
- Check to be sure a provider is an approved provider type based on patients' insurance plans.
- Carefully review the medical staff bylaws to ensure they are aligned with telehealth and virtual service delivery and do not act as an impediment to the telehealth program.

Malpractice coverage. Consider whether the CAH needs to know which providers' malpractice coverage includes telehealth services and have a backup plan if not. This may be challenging for

CAH/RHCs because much of their telehealth is provided by distant site providers. It may be challenging to know beforehand who has telehealth malpractice coverage and who does not.

Missed and delayed diagnoses. Many medical malpractice settlements result from missed and delayed diagnoses, and the nature of telehealth may increase the risk. See additional information under [Patient Safety](#).

Audits. CMS is concerned with the potential of fraud with telehealth and virtual services and has [begun conducting audits](#). Consider random internal audits and/or peer review of medical records to ensure compliance.

Resources

1. [Northwest Regional Telehealth Resource Center](#). Offers online training telehealth training opportunities. The Washington State Health care Professional Telemedicine Training is required for all clinicians (except physicians) that will deliver telehealth services in WA. However, it is not just WA-specific and is an excellent training.
2. [New York State Telehealth Training Portal](#) Excellent telehealth training offered by the Northeast Telehealth Resource Center – not just specific to NY. Must sign up for a free account to access the training opportunities. Currently not offering CME/CEU.

HIPAA Privacy & Security

Many organizations overlook the privacy and security considerations when implementing telehealth. These issues are compounded when the care team and others work virtually. Below are essential issues to address.

HIPAA Privacy

Use a headset or earbuds. This is a recommendation for patients and their families and caregivers, clinicians, and care team members. An exam room provides a space for private conversations for all involved; it is vital to maintain a similar level of privacy during virtual visits and communication. On both ends of the virtual communication, it is essential that 1) patients and clinicians can speak freely without risk of being overheard by someone who should not or

does not need to hear the conversation and 2) the computer mic is not used when there are others near who can hear either or both sides of the conversation. Using a headset or earbuds can help alleviate this privacy issue.

Display signage when a telehealth visit is in progress. This helps prevent accidental exposure of patient-protected health information (PHI) either by seeing information on the screen or from overhearing the conversations.

Protect patient's PHI – additional recommendations:

- Use a privacy screen so others cannot read patients' information, especially if working from home.
- Do not let family or friends use your work device.
- Share the minimum necessary information for others involved in the care of the patient. This is especially true for CAHs and RHCs that act as originating sites and send patient information to specialists and other shared care partners in advance of telehealth visits.

HIPAA Security & the Security Risk Analysis

Adhering to the HIPAA standards and implementation specifications components of the security risk analysis (SRA) is required by the HIPAA Security Rule. The checklist below provides some relevant guidance based on some of the required components of the SRA. Note that this is not legal advice, nor is this checklist comprehensive by any means.

- Our designated Security Officer (required by HIPAA) has updated all relevant HIPAA standards and implementation specifications in our security risk analysis to include the changes we have made with telehealth and other virtual services.
- The Security Officer has provided telehealth-specific training to all members delivering, supporting, or participating in telehealth and virtual services. Ongoing security awareness

training is required as part of the HIPAA security rule. It is the responsibility of the designated Security Officer to ensure it happens.

- We have a security awareness and training program that includes security concerns specific to the care team members working virtually.
- All devices (e.g., laptops, tablets, etc.), including those used by care team members working virtually:
 - Are protected, using unique passwords for each user.
 - Have current and functioning antivirus software.
 - Terminate an electronic session after a predetermined time of inactivity.
 - Include the ability to encrypt/decrypt electronic PHI (ePHI) when deemed appropriate.
 - Are included in the inventory of all devices that create, receive, maintain, or transmit ePHI.
 - Can be remotely wiped and disabled (in the event of theft or loss of the device(s)).
 - Are protected by a firewall whenever possible.
 - Have updated security software.
- Any telehealth platforms that we use are HIPAA-compliant, and we have signed business associate agreements (BAAs) for relevant persons or entities as described by the Office for Civil Rights.²⁴

Resources:

1. [Your Mobile Device and Health Information Privacy and Security](#). HealthIT.gov. Provides specific guidance on protecting and securing health information when using a mobile device.

²⁴ [Business Associates](#). U.S. Department of Health & Human Services – Office for Civil Rights.

2. [Covered Entity Decision Tool](#). CMS. Helps to identify entities, including individuals that need to comply with HIPAA.

Business Associate Agreements (BAAs)

BAAs should be signed with any vendors or other associates that fulfill the definition of a business associate. “A “business associate” is a person or entity, other than a member of the workforce of a covered entity, who performs functions or activities on behalf of, or provides certain services to, a covered entity that involves access by the business associate to protected health information.” – a solid recommendation to read the full text at the source of this information - [Business Associates](#) from U.S. Department of Health & Human Services.

Rules, Regulations & Keeping Current

Using select resources and subscribing to a few high-value newsletter lists, it is possible to stay in the know on telehealth rules and regulations. Here are a few recommendations:

1. Subscribe to CMS' [Electronic Mailing Lists](#)
 - **“Your MAC’s Electronic Mailing List:** [Subscribe to your Medicare Administrative Contractor’s \(MAC\) mailing list](#) for national and local Fee-for-Service (FFS) program news from your MAC, MLN Connects® newsletter content, and MLN Matters® Article and Medicare Learning Network (MLN) product updates.
 - **MLN Connects Newsletter:** [Subscribe to the weekly MLN Connects newsletter](#) for all national FFS program news, events, and MLN Matters Article and MLN product updates. Learn more and read the current edition of the [MLN Connects newsletter](#).”
2. Subscribe to the [Center for Connected Health Policy emails](#). Scroll down to “Telehealth policy updates delivered straight to your inbox.” Enter your information and subscribe.

3. Go to your state Medicaid agency website and subscribe to updates. Do the same for any other health plans serving your patients if email updates are offered.
4. Peruse the next Calendar Year Physician Fee Schedule (CY PFS) Proposed (published ~ July) and Final Rules (published ~ Nov). If you subscribe to the MLN Connects Newsletter and CCHP updates, you will be alerted when these are available. These documents are several hundreds of pages long but using the search feature can make focusing on what is relevant to CAH/RHCs much easier. The proposed rule provides a sense of what is to come and includes details and discussions not always included in the final rule. Current and past CY PFS rules can be found [here](#).
5. Review the Resources to Bookmark below.

Resources to Bookmark

1. [Center for Connected Health Policy](#). Provides detailed state Medicaid agency telehealth policy with helpful links to each states' relevant resources, manuals, statutes, etc.
2. [Critical Access Hospitals \(CAHs\)](#). Rural Health Information Hub. Provides excellent information about CAHs, including a comprehensive set of FAQs.
3. [National Telehealth Technology Assessment Resource Center](#). An excellent resource for anything related to telehealth technology. Highly recommended learning opportunities include:
 - a. [Toolkit: Clinician's Guide to Video Platforms](#). Each of the 18 web pages includes a short YouTube video and well-organized accompanying text with additional detail.
 - b. [Technology Assessment 101](#). Includes a nice flow diagram with seven key steps.
4. [CMS' List of Telehealth Services](#). CMS. Complete list of telehealth services and codes frequently updated during the PHE but usually just updated annually.
5. [Telehealth.HHS.gov](#). Health Resources & Services Administration. Excellent telehealth resources and guidance for patients and providers.
6. [Rural Telehealth Toolkit](#). Rural Health Information Hub. Excellent resource with topics ranging from introduction to telehealth to funding and sustainability.
7. [§ 410.27 Therapeutic outpatient hospital or CAH services and supplies incident to a physician's or nonphysician practitioner's service: Conditions](#). Helpful information to have on hand.

Appendices

Appendix A – Telehealth Services and Codes

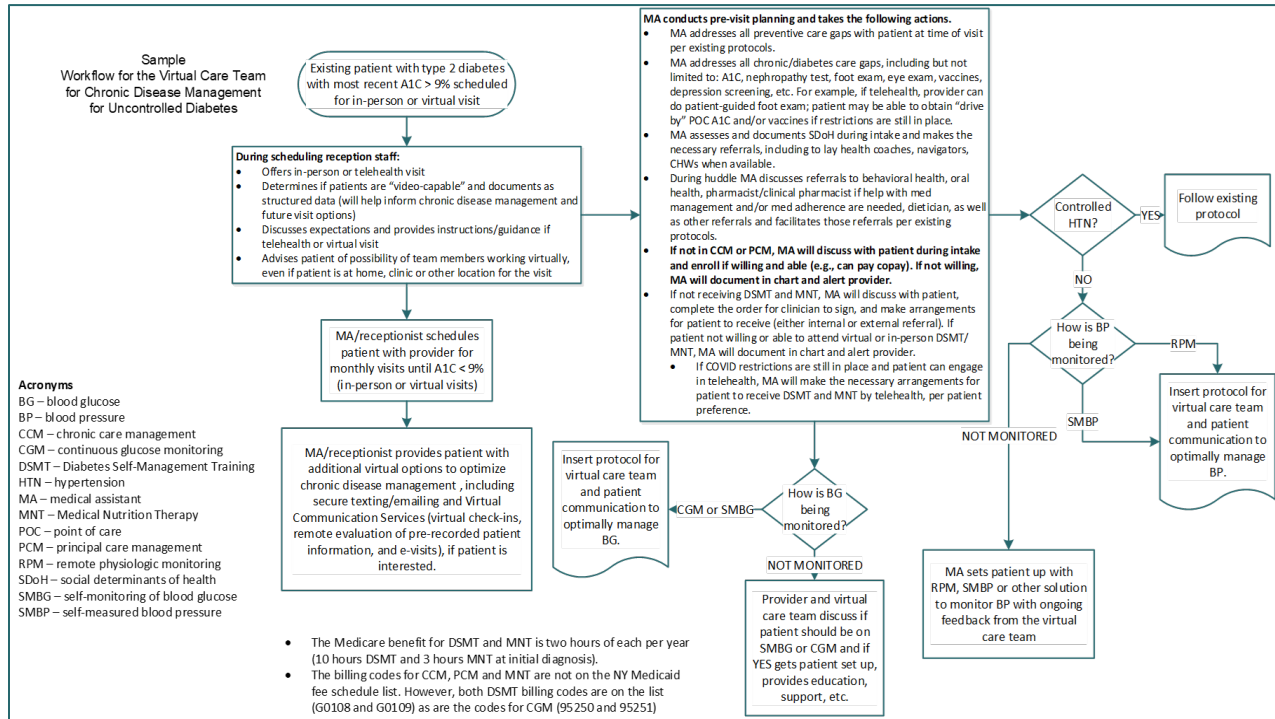
The [Telehealth Services and Codes](#) table provided by the Northwest Regional Telehealth Resource Center includes current telehealth codes, grouped and with brief descriptions. See your CPT® Professional codebook for full descriptions and additional requirements.

- When a code description notes “face-to-face”, recall that a telehealth visit with video is a face-to-face visit as is an in-person encounter.
- Medicare payment amounts for the telehealth codes may be found on the [Physician Fee Schedule look-up website](#).

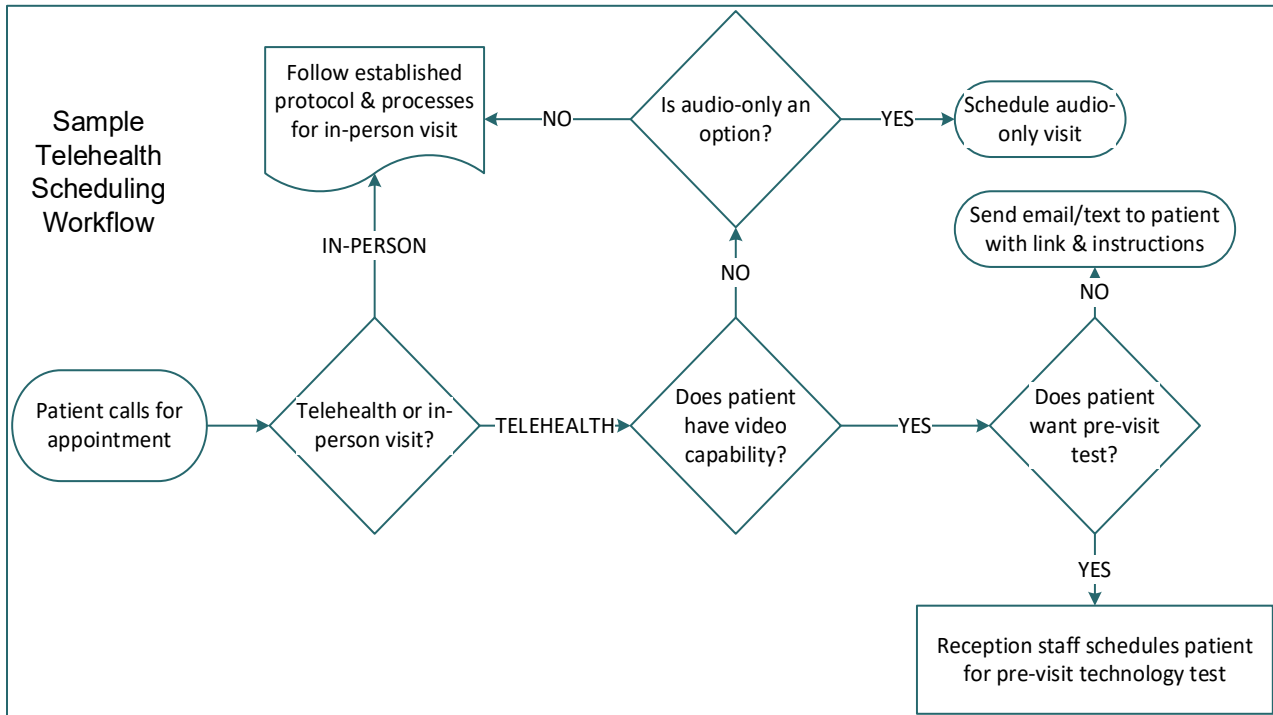
Appendix B – Sample Telehealth-Related Workflows

There are several ways to document telehealth workflows.

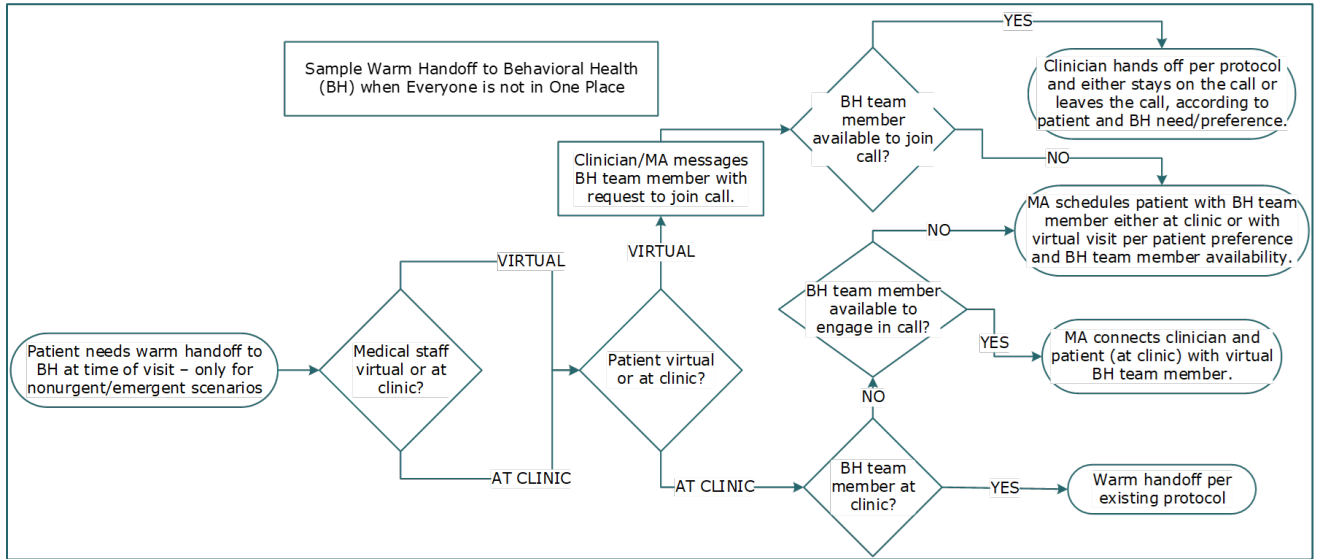
Workflow 1 – Virtual Care Team Workflow for Uncontrolled Diabetes Care Management



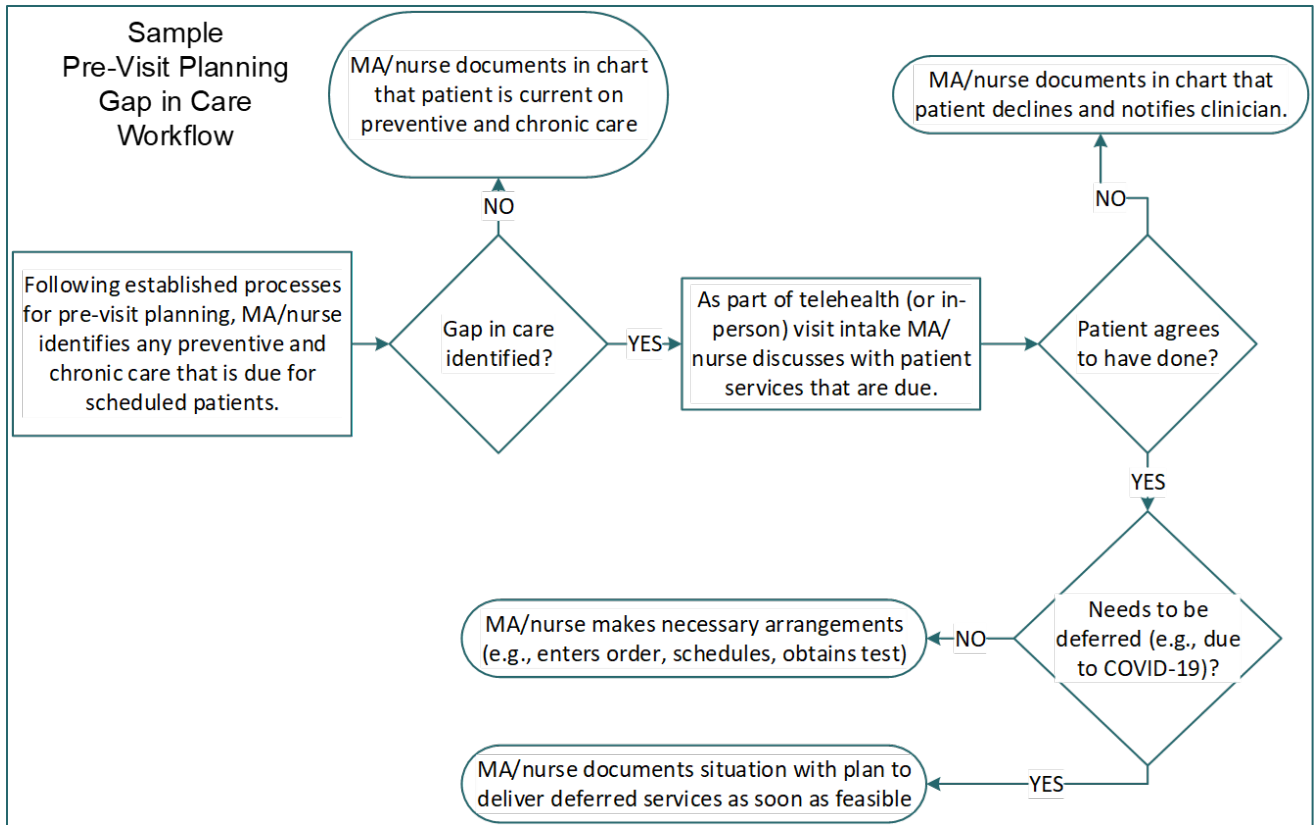
Workflow 2 – Sample Telehealth Scheduling



Workflow 3 – Sample Warm Handoff to Behavioral Health Team Member



Workflow 4 – Sample Pre-Visit Planning



Appendix C – Telehealth Program Assessment

The Telehealth Program Assessment can also be found on the NRTRC website under [CAH Telehealth Guide and Tools](#).